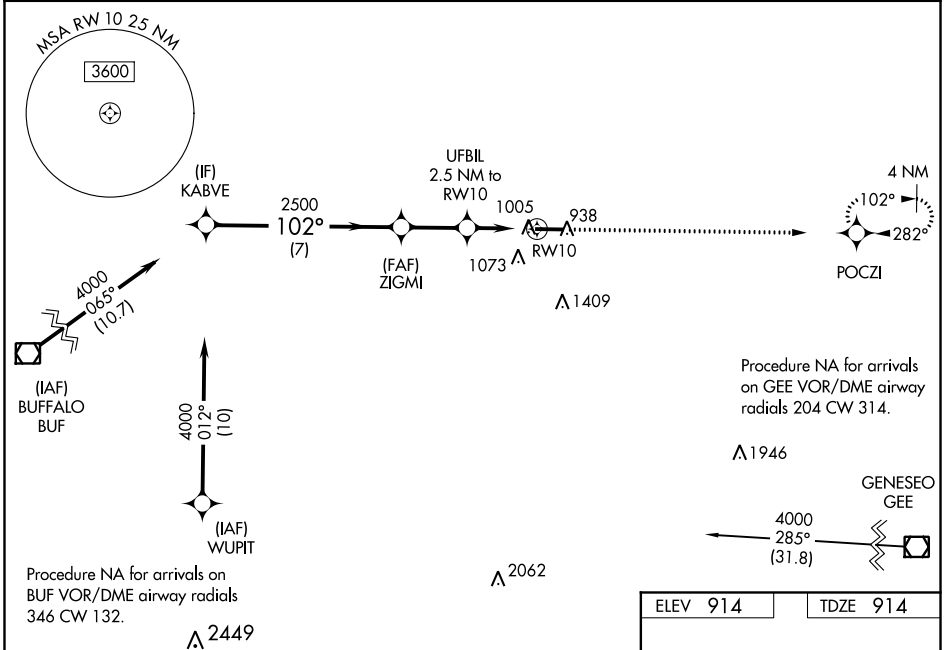


WAAS CH 82421 W10A	APP CRS 102°	Rwy Idg TDZE Apt Elev	5499 914 914
--	------------------------	-----------------------------	---

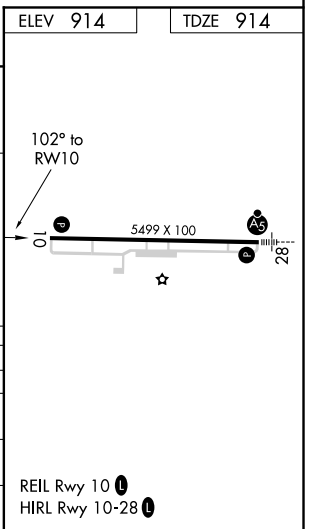
RNAV (GPS) RWY 10

GENESEE COUNTY (GVQ)

<p>NA For uncompensated Baro-VNAV systems, LNAV/VNAV NA below -16°C (4°F) or above 38°C (100°F). DME/DME RNP-0.3 NA. When local altimeter setting not received, use Rochester altimeter setting and increase LPV DA all Cats to 1214, LNAV/VNAV DA all Cats to 1268, and all MDA 120 feet; increase LPV all Cats and Circling Cat D visibility ¼ mile, increase LNAV/VNAV all Cats and LNAV Cats C/D visibility ⅓ mile. Baro-VNAV and VDP NA when using Rochester altimeter setting.</p>		<p>MISSED APPROACH: Climb to 3000 direct POCZI and hold.</p>	
AWOS-3PT 127.525	ROCHESTER APP CON 123.7 322.3	CLNC DEL 121.8	UNICOM 122.7 (CTAF) 0



KABVE		ZIGMI		UFBIL 2.5 NM to RW10		RW10		POCZI	
4000		2500		2500		1740		3000	
GP 3.00° TCH 40		102°		* 1 NM to RW10		* LNAV only.			
7 NM		2.4 NM		1.5 NM					
CATEGORY	A	B	C	D					
LPV DA	1114-¾		200 (200-¾)						
LNAV/VNAV DA	1168-⅞		254 (300-⅞)						
LNAV MDA	1260-1		346 (400-1)						
CIRCLING	1380-1 466 (500-1)		1380-1½ 466 (500-1½)		1480-2 566 (600-2)				



NE-2, 22 APR 2021 to 20 MAY 2021

NE-2, 22 APR 2021 to 20 MAY 2021