

WAAS CH 90208 W18A	APP CRS 181°	Rwy ldg 4997 TDZE 1191 Apt Elev 1191
--	------------------------	---

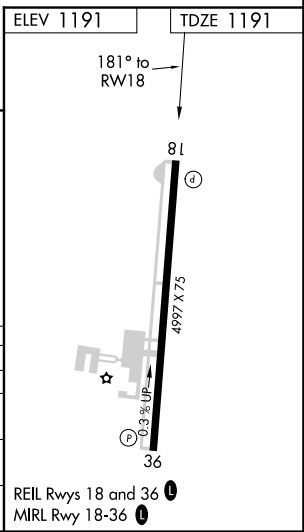
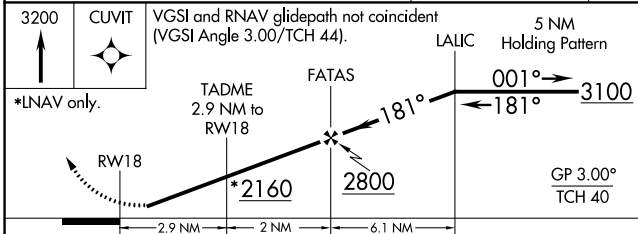
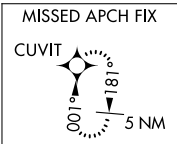
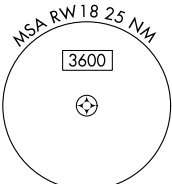
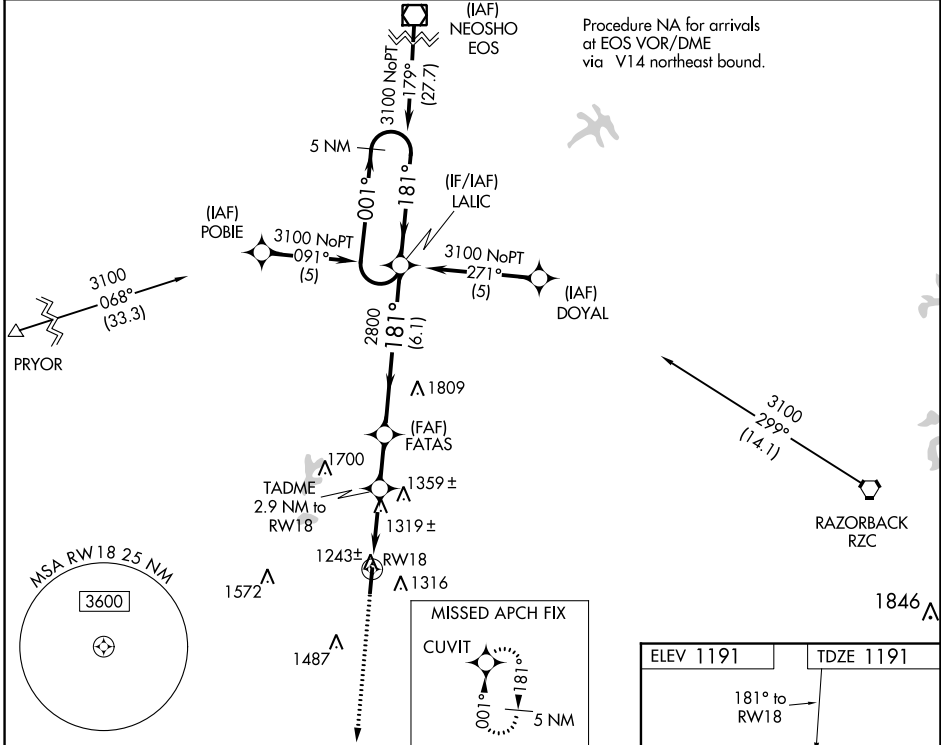
RNAV (GPS) RWY 18

SMITH FIELD (SLG)

▼ Baro-VNAV NA when using Northwest Arkansas Nil altimeter setting. For uncompensated Baro-VNAV systems, LNAV/VNAV NA below -17°C (2°F) or above 46°C (114°F). DME/DME RNP-0.3 NA. Visibility reduction by helicopters NA. When local altimeter setting not received, use Northwest Arkansas Nil altimeter setting, and increase all DA/MDA 40 feet, and increase LPV visibility ¼ mile all Cats, LNAV/VNAV visibility ½ mile all Cats, and LNAV visibility Cat C and D ½ mile.

MISSED APPROACH:
Climb to 3200 direct CUVIT and hold.

AWOS-3PT 118.375	RAZORBACK APP CON * 121.0 244.575	UNICOM 122.8 (CTAF) ①
----------------------------	---	--



CATEGORY	A	B	C	D
LPV DA		1479-1	288 (300-1)	
LNAV/VNAV DA		1623-1½	432 (500-1½)	
LNAV MDA	1580-1	389 (400-1)		1580-1¼ 389 (400-1¼)
CIRCLING	1620-1 429 (500-1)	1720-1 529 (600-1)	1720-1½ 529 (600-1½)	1760-2 569 (600-2)

REIL Rwy 18 and 36 **①**
MIRL Rwy 18-36 **①**

SC-1, 22 APR 2021 to 20 MAY 2021

SC-1, 22 APR 2021 to 20 MAY 2021