

WAAS CH <b>63105</b> <b>W36A</b>	APP CRS <b>001°</b>	Rwy Idg TDZE <b>1181</b> Apt Elev <b>1191</b>
--	------------------------	---

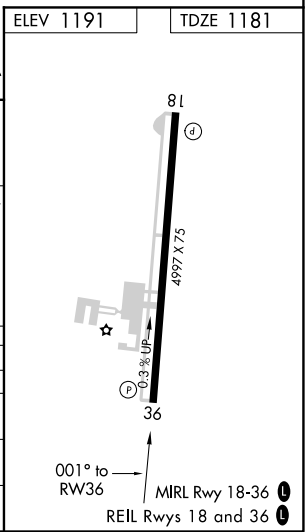
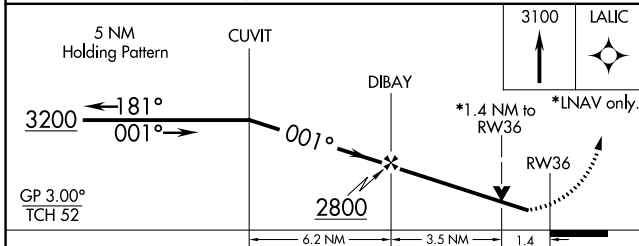
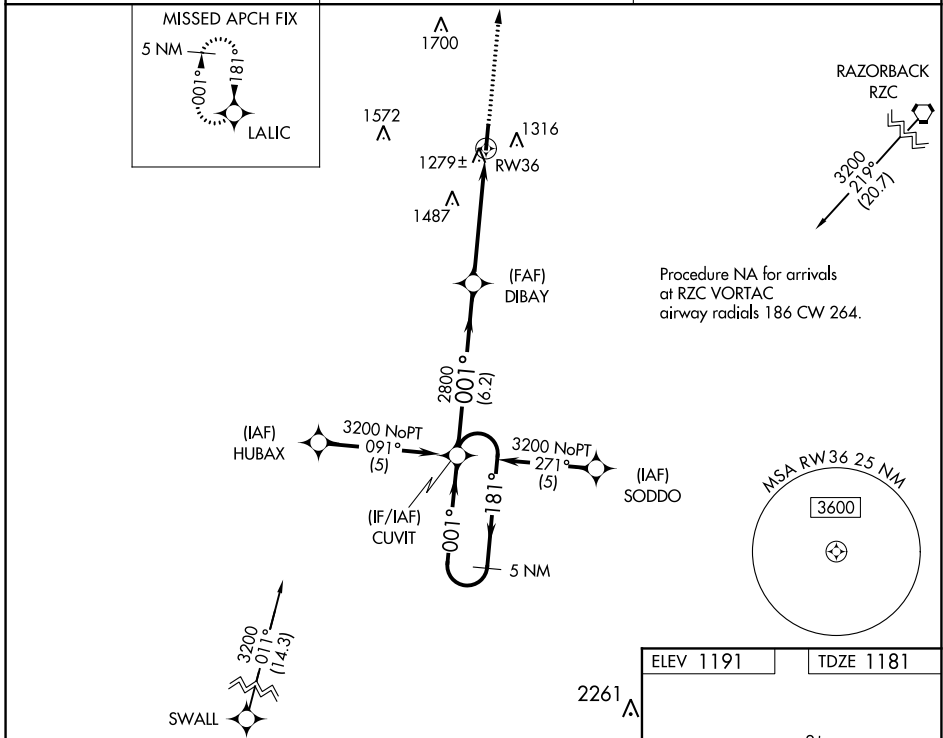
# RNAV (GPS) RWY 36

SMITH FIELD (SLG)

**⚠** If local altimeter setting not received, use Northwest Arkansas Nil altimeter setting and increase all DAs/MDAs 40 feet. For uncompensated Baro-VNAV systems, LNAV/VNAV NA below -17°C (2°F) or above 46°C (114°F). DME/DME RNP-0.3 NA. Visibility reduction by helicopters NA. Baro-VNAV and VDP NA when using Northwest Arkansas Nil altimeter setting.

**MISSED APPROACH:**  
Climb to 3100 direct LALIC and hold.

AWOS-3PT <b>118.375</b>	RAZORBACK APP CON * <b>121.0 244.575</b>	UNICOM <b>122.8 (CTAF) ①</b>
----------------------------	---	---------------------------------



CATEGORY	A	B	C	D
LPV DA		1431-1	250 (300-1)	
LNAV/VNAV DA		1549-1¼	368 (400-1¼)	
LNAV MDA	1660-1	479 (500-1)	1660-1¼ 479 (500-1¼)	1660-1½ 479 (500-1½)
CIRCLING	1660-1 469 (500-1)	1720-1 529 (600-1)	1720-1½ 529 (600-1½)	1760-2 569 (600-2)

SC-1, 22 APR 2021 to 20 MAY 2021

SC-1, 22 APR 2021 to 20 MAY 2021