

WAAS CH <b>82325</b> <b>W25A</b>	APP CRS <b>252°</b>	Rwy Idg TDZE Apt Elev	<b>4199</b> <b>23</b> <b>23</b>
--	------------------------	-----------------------------	---------------------------------------

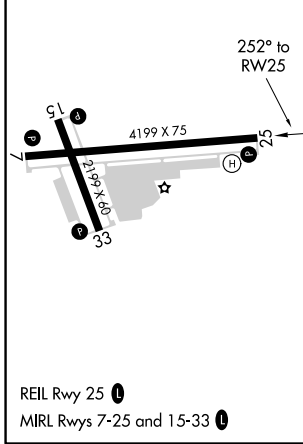
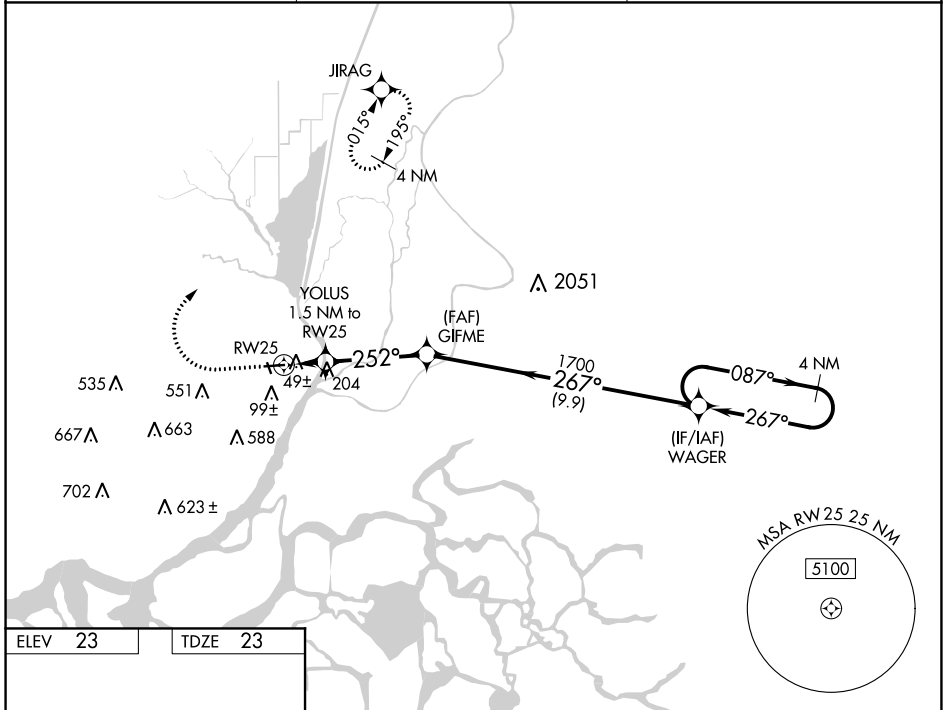
# RNAV (GPS) RWY 25

RIO VISTA MUNI (O88)

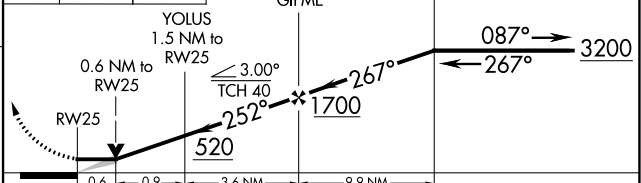
**⚠ NA** Circling Rwy 33 NA at night. DME/DME RNP-0.3 NA. VDP NA when using Concord altimeter setting. When local altimeter setting not received, use Concord altimeter setting and increase all MDA 60 feet and increase LP and LNAV Cat C visibility 1/8 mile and Circling Cat C visibility 1/4 mile.

**MISSED APPROACH:** Climb to 500 then climbing right turn to 3100 direct JIRAG and hold, continue climb-in-hold to 3100.

AWOS-AV <b>127.075</b>	TRAVIS APP CON <b>119.9 322.325</b>	UNICOM <b>122.725</b> (CTAF) <b>📻</b>
---------------------------	--	--



500 3100 JIRAG VGSi and descent angles not coincident (VGSi Angle 4.00/TCH 40). 4 NM Holding Pattern



CATEGORY	A	B	C	D
LP MDA	300-1	277 (300-1)	300-7/8 277 (300-7/8)	NA
LNAV MDA	460-1	437 (500-1)	460-1 1/4 437 (500-1 1/4)	NA
CIRCLING	520-1 497 (500-1)	560-1 537 (600-1)	580-1 1/2 557 (600-1 1/2)	NA

SW-2, 22 APR 2021 to 20 MAY 2021

SW-2, 22 APR 2021 to 20 MAY 2021