

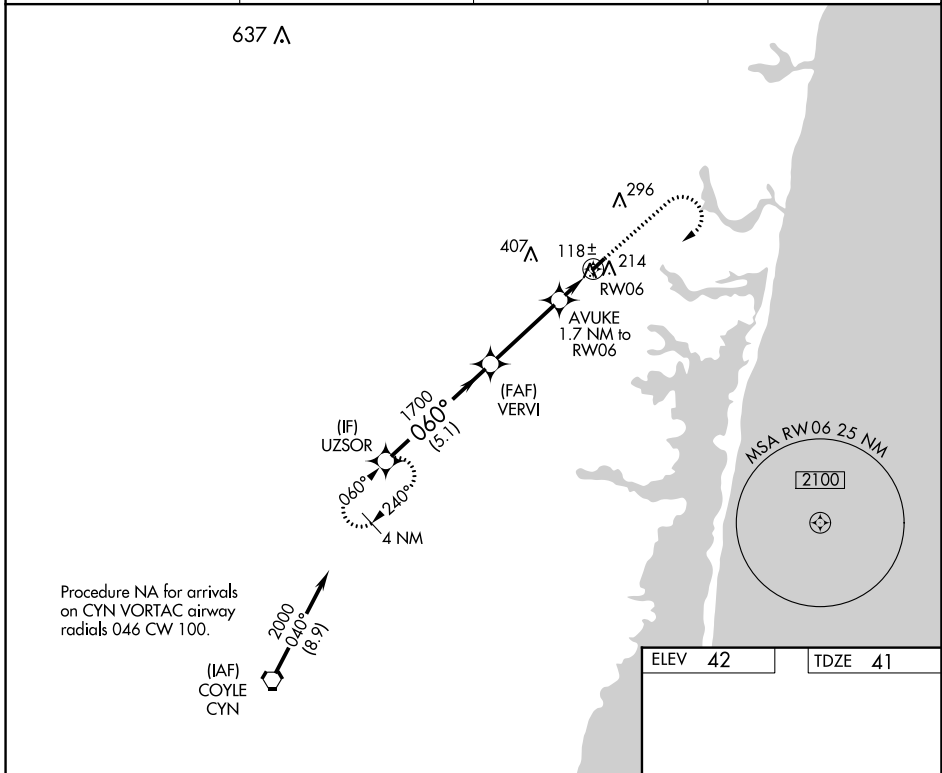
WAAS CH <b>49038</b> <b>W06A</b>	APP CRS <b>060°</b>	Rwy Idg TDZE <b>41</b> Apt Elev <b>42</b>	<b>2726</b>
--	------------------------	---	-------------

# RNAV (GPS) RWY 6

LAKEWOOD (N12)

<p><b>▼</b> DME/DME RNP-0.3 NA. Procedure NA at night. Helicopter visibility reduction below 1 SM NA. When local altimeter setting not received, use Lakehurst altimeter setting and increase all MDA 40 feet.</p> <p><b>▲</b> NA</p>	<p><b>MISSED APPROACH</b> Climb to 1000 then climbing right turn to 2000 direct UZSOR and hold.</p>
---	---

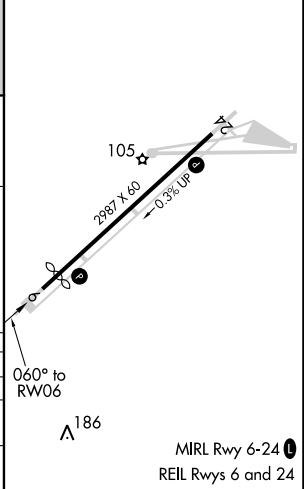
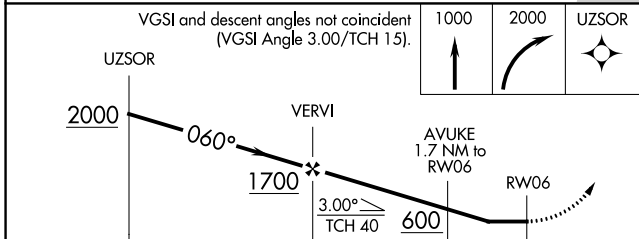
AWOS-AV <b>122.8</b>	MC GUIRE APP CON <b>126.475 363.8</b>	GCO <b>121.725</b>	UNICOM <b>122.8 (CTAF)</b>
-------------------------	--	-----------------------	-------------------------------



NE-2, 22 APR 2021 to 20 MAY 2021

NE-2, 22 APR 2021 to 20 MAY 2021

ELEV 42	TDZE 41
---------	---------



CATEGORY	A	B	C	D
LP MDA	380-1	339 (400-1)		NA
LNAV MDA	580-1	539 (600-1)		NA
<b>C</b> CIRCLING	580-1 538 (600-1)	620-1 578 (600-1)		NA