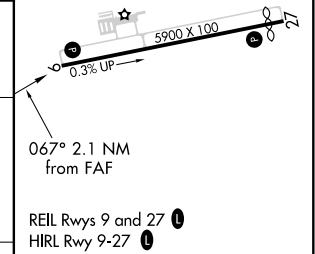
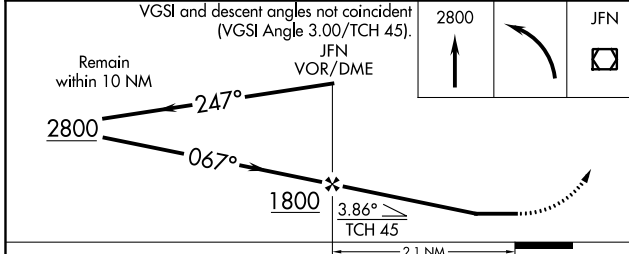
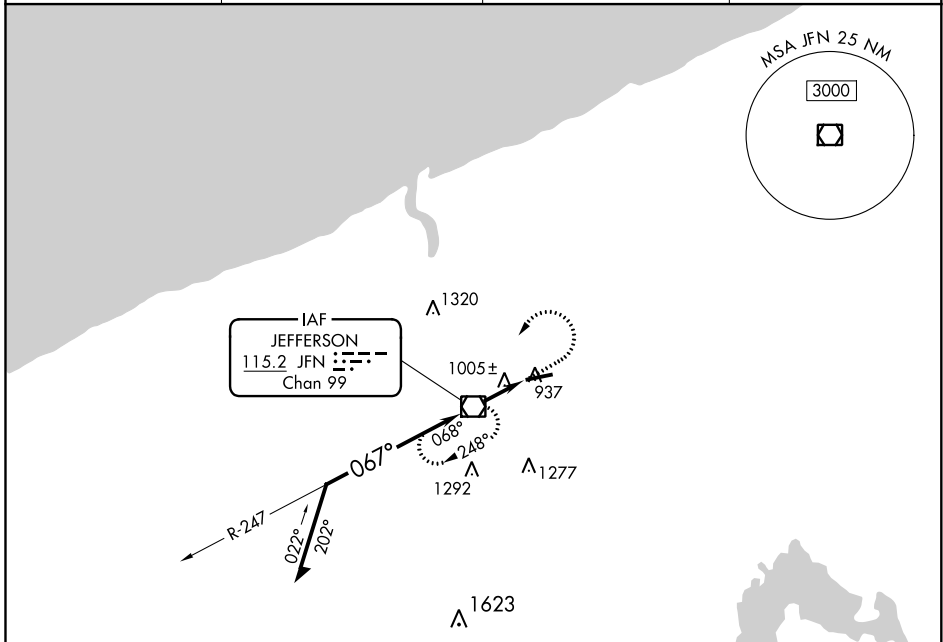


VOR/DME JFN 115.2 Chan 99	APP CRS 067°	Rwy Idg TDZE Apt Elev 926	N/A N/A 926
---	------------------------	---	--

VOR-A
NORTHEAST OHIO RGNL (HZY)

RADAR Required for Procedure Entry.		MISSED APPROACH: Climb to 2800 then left turn direct JFN VOR/DME and hold.	
ASOS 118.325	BUFFALO APP CON * 121.0	UNICOM 122.8 (CTAF)	123.3 0



CATEGORY	A	B	C	D	FAF to MAP 2.1 NM					
C CIRCLING	1340-1 414 (500-1)	1380-1 454 (500-1)	1500-1½ 574 (600-1½)	1580-2 654 (700-2)	Knots	60	90	120	150	180
					Min:Sec	2:06	1:24	1:03	0:50	0:42

EC-2, 22 APR 2021 to 20 MAY 2021

EC-2, 22 APR 2021 to 20 MAY 2021