

APP CRS <b>030°</b>	Rwy Idg <b>3829</b>
	TDZE <b>235</b>
	Apt Elev <b>235</b>

# RNAV (GPS) RWY 3

WARREN MUNI (3M9)

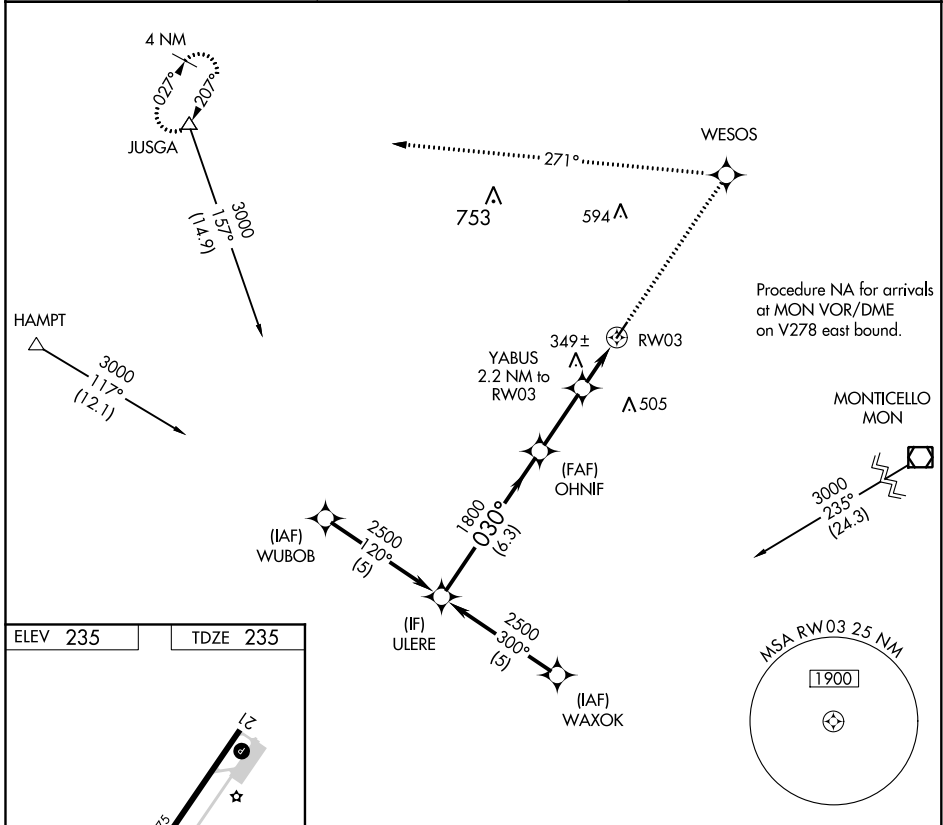
RNP APCH.

▼ Use Monticello altimeter setting; when not received, use El Dorado altimeter setting and increase MDA 60 feet and LNAV Cat C visibility 1/8 SM.

▲ NA

MISSED APPROACH: Climb to 3000 direct WESOS and left turn on 271° track to JUSGA and hold.

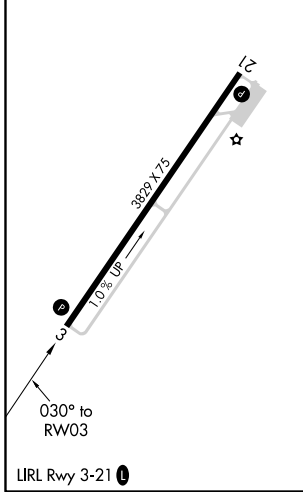
LLQ ASOS <b>133.325</b>	MEMPHIS CENTER <b>135.875 269.35</b>	CTAF <b>122.9 0</b>
----------------------------	---	------------------------



SC-1, 22 APR 2021 to 20 MAY 2021

SC-1, 22 APR 2021 to 20 MAY 2021

ELEV 235	TDZE 235
----------	----------



VGSIs and descent angles not coincident (VGSIs Angle 3.00/TCH 40).			
ULERE	OHNIF	3000 WESOS	JUSGA
2500	1800	3000	tr 271°
Procedure Turn NA		YABUS 2.2 NM to RW03	RW03
6.3 NM		2.7 NM	2.2 NM
CATEGORY	A	B	C
LNAV MDA	660-1	425 (500-1)	660-1 1/4 425 (500-1 1/4)
			NA