

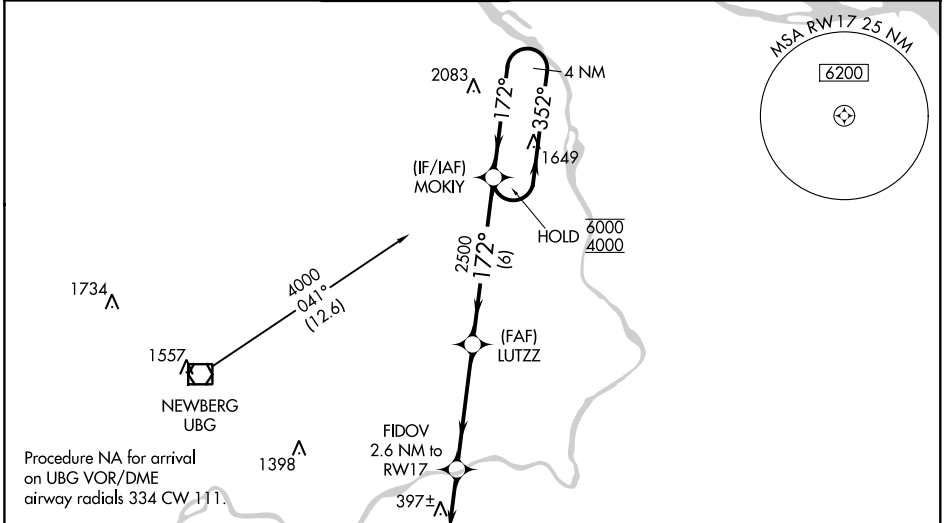
WAAS CH <b>70308</b> <b>W17A</b>	APP CRS <b>172°</b>	Rwy Idg <b>5003</b> TDZE <b>200</b> Apt Elev <b>200</b>
--	------------------------	---

# RNAV (GPS) RWY 17

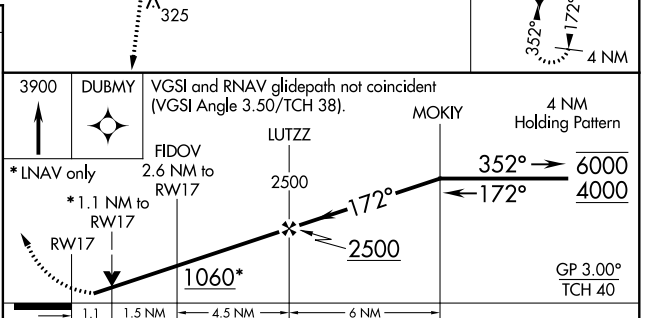
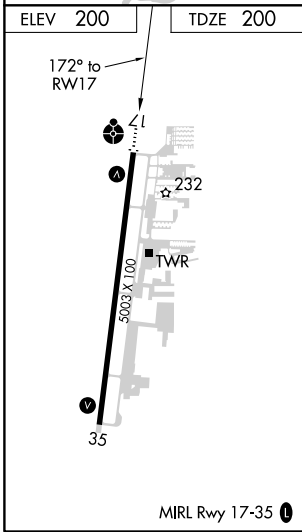
AURORA STATE (UAO)

RNP APCH.	<p><b>⚠</b> Rwy 17 helicopter visibility reduction below 3/4 SM NA. For uncompensated Baro-VNAV systems, LNAV/VNAV NA below -6°C or above 54°C. For inop ALS, increase LNAV/VNAV Cat A/B and LNAV Cat C/D visibility to 1 1/8 SM. Inop table does not apply to LPV and LNAV Cat A/B.</p>	ODALS	MISSED APPROACH: Climb to 3900 direct DUBMY and hold, continue climb-in-hold to 3900.
-----------	--	-------	---

ATIS * <b>118.525</b>	PORTLAND APP CON <b>126.0 269.175</b>	AURORA TOWER * <b>120.35 (CTAF) 0</b>	GND CON <b>119.15</b>	CLNC DEL <b>119.15</b>	PORTLAND CLNC DEL <b>119.95</b> (When tower closed)
--------------------------	--	--	--------------------------	---------------------------	---



Procedure NA for arrival on UBG VOR/DME airway radials 334 CW 111.



CATEGORY	A	B	C	D
LPV DA		511-7/8	311 (400-7/8)	
LNAV/VNAV DA		661-1 1/4	461 (500-1 1/4)	
LNAV MDA	660-1	460 (500-1)	660-1 1/8	460 (500-1 1/8)
<input checked="" type="checkbox"/> CIRCLING	700-1	500 (500-1)	700-1 1/2 500 (500-1 1/2)	940-2 1/4 740 (800-2 1/4)

NW-1, 22 APR 2021 to 20 MAY 2021

NW-1, 22 APR 2021 to 20 MAY 2021