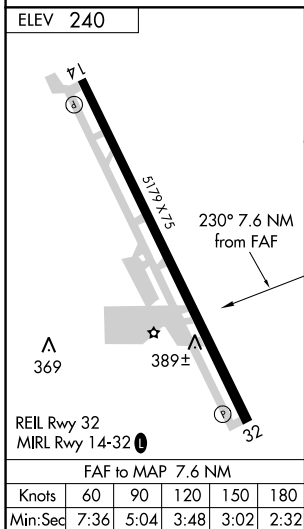
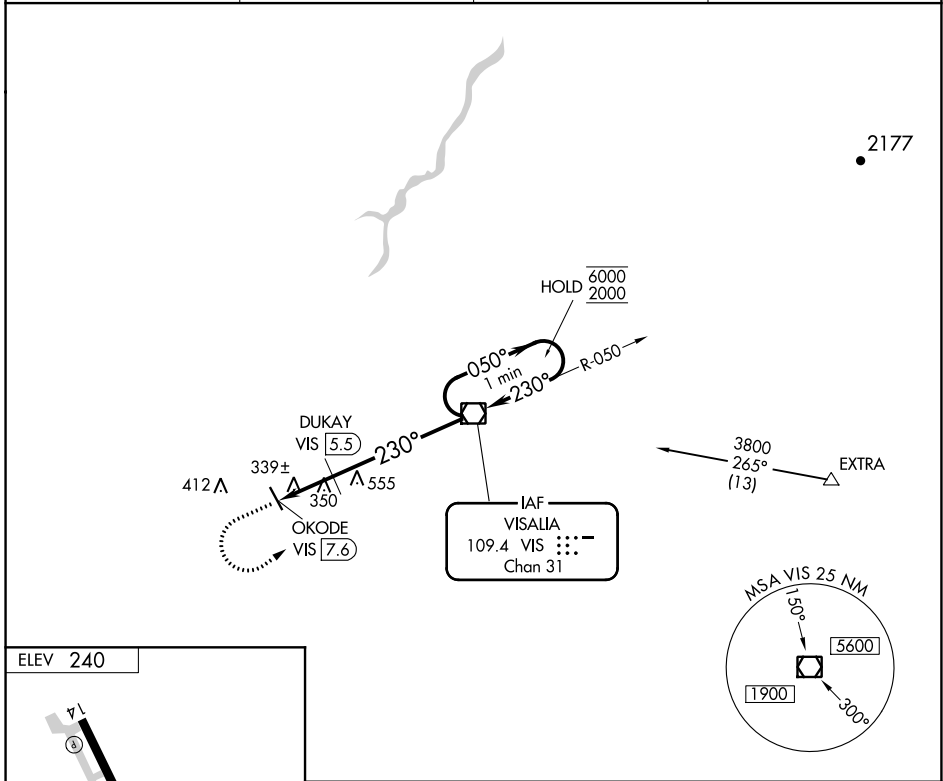


VOR/DME VIS 109.4 Chan 31	APP CRS 230°	Rwy Idg TDZE Apt Elev 240	N/A N/A 240
---	------------------------	---	--

VOR-A
HANFORD MUNI (HJO)

◀ Circling Rwy 14 NA at night. MISSED APPROACH: Climb to 1300 then climbing left turn to 2000 direct VIS VOR/DME and hold.

ASOS 134.75	FRESNO APP CON 123.9	CLNC DEL 123.9	UNICOM 122.8 (CTAF) 0
-----------------------	--------------------------------	--------------------------	--



1300	2000	VIS	VIS VOR/DME		One Minute Holding Pattern
↑	↶	◻	OKODE VIS 7.6	DUKAY VIS 5.5	050° → 6000 ← 230° 2000
2.1 NM		5.5 NM			
CATEGORY	A	B	C	D	
C CIRCLING	940-1	700 (700-1)	940-2 700 (700-2)	NA	
DUKAY FIX MINIMUMS					
C CIRCLING	680-1 440 (500-1)	720-1 480 (500-1)	720-1½ 480 (500-1½)	NA	

SW-2, 22 APR 2021 to 20 MAY 2021

SW-2, 22 APR 2021 to 20 MAY 2021