

LOC I-SGO	APP CRS	Rwy Idg	<b>5002</b>
<b>109.7</b>	<b>060°</b>	TDZE	<b>142</b>
		Apt Elev	<b>144</b>

# LOC RWY 6

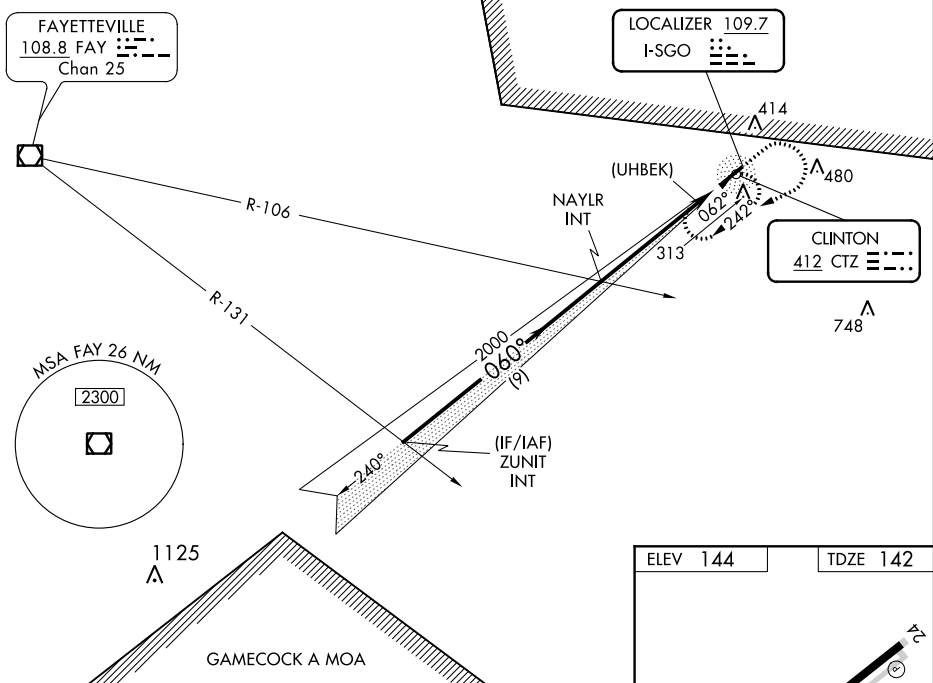
CLINTON-SAMPSON COUNTY (CTZ)

**⚠** When local altimeter setting not received, use Kenansville altimeter setting and increase all MDA 60 feet, increase S-6 Cats C/D visibility 1/8 mile and increase Circling Cats C/D visibility 1/4 mile. Rwy 24 helicopter visibility reduction below 1 SM NA. Circling Rwy 24 NA at night.

**MISSED APPROACH:** Climb to 2000 direct CTZ NDB and hold, continue to climb-in-hold to 2000 (ADF required).

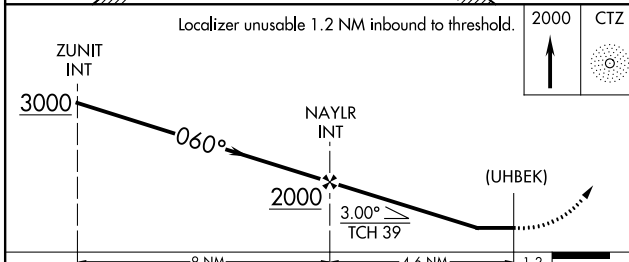
AWOS-3 <b>119.125</b>	FAYETTEVILLE APP CON <b>133.0 290.25</b>	UNICOM <b>122.8 (CTAF) 0</b>
--------------------------	---	---------------------------------

## RADAR REQUIRED



SE-2, 22 APR 2021 to 20 MAY 2021

SE-2, 22 APR 2021 to 20 MAY 2021



ELEV 144	TDZE 142
MIRL Rwy 6-24 REIL Rws 6 and 24	
FAF to MAP 4.6 NM	
CATEGORY	A B C D
S-6	620-1 1/2 478 (500-1 1/2)
CIRCLING	680-1 1/2 536 (600-1 1/2) 780-1 3/4 636 (700-1 3/4) 780-2 636 (700-2)
Knots	60 90 120 150 180
Min:Sec	4:36 3:04 2:18 1:50 1:32