

WAAS CH 53720 W06A	APP CRS 060°	Rwy Idg 5002 TDZE 142 Apt Elev 144
--	------------------------	---

RNAV (GPS) RWY 6

CLINTON-SAMPSON COUNTY (CTZ)

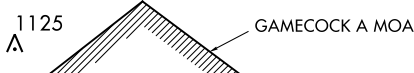
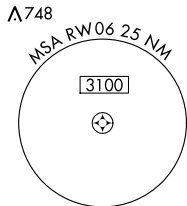
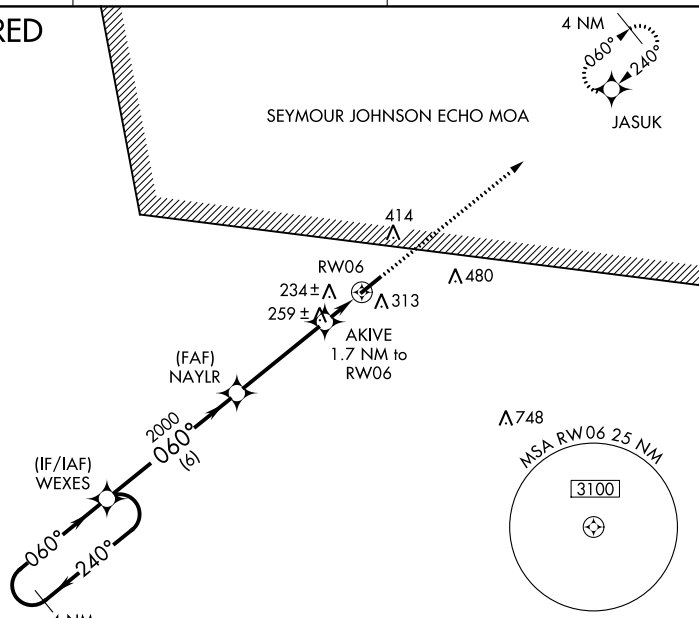
⚠ Baro-VNAV NA when using Kenansville altimeter setting. For uncompensated Baro-VNAV systems, LNAV/VNAV NA below -15°C (5°F) or above 43°C (109°F). DME/DME RNP-0.3 NA. VDP NA with Kenansville altimeter setting. When local altimeter setting not received, use Kenansville altimeter setting and increase all DA 45 feet and all MDA 60 feet and increase LNAV/VNAV all Cats visibility 1/8 mile, LNAV Cats C/D and Circling Cats C/D visibility 1/4 mile. Rwy 24 helicopter visibility reduction below 1 SM NA. Circling Rwy 24 NA at night.

MISSED APPROACH:
Climb to 2500 direct JASUK and hold.

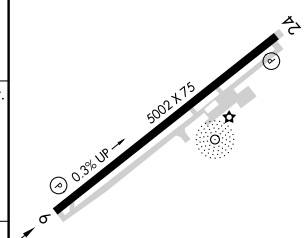
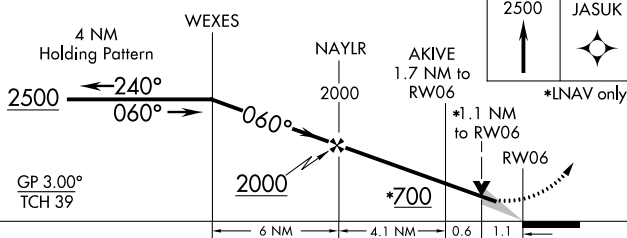
AWOS-3 119.125	FAYETTEVILLE APP CON 133.0 290.25	UNICOM 122.8 (CTAF)
--------------------------	---	-------------------------------

RADAR REQUIRED

SEYMOUR JOHNSON ECHO MOA



ELEV 144	TDZE 142
-----------------	-----------------



CATEGORY	A	B	C	D
LPV DA		342-3/4	200 (200-3/4)	
LNAV/ VNAV DA		545-1 3/8	403 (500-1 3/8)	
LNAV MDA	520-1 378 (400-1)		520-1 1/8 378 (400-1 1/8)	
CIRCLING	680-1 536 (600-1)		780-1 3/4 636 (700-1 3/4)	780-2 636 (700-2)

MIRL Rwy 6-24
REIL Rws 6 and 24

SE-2, 22 APR 2021 to 20 MAY 2021

SE-2, 22 APR 2021 to 20 MAY 2021