

WAAS CH <b>99321</b> <b>W24B</b>	APP CRS <b>240°</b>	Rwy Idg TDZE <b>144</b> Apt Elev <b>144</b>	<b>5002</b>
--	------------------------	---	-------------

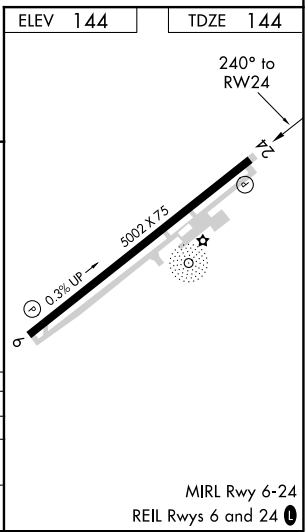
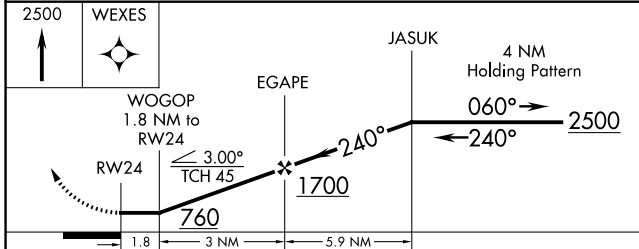
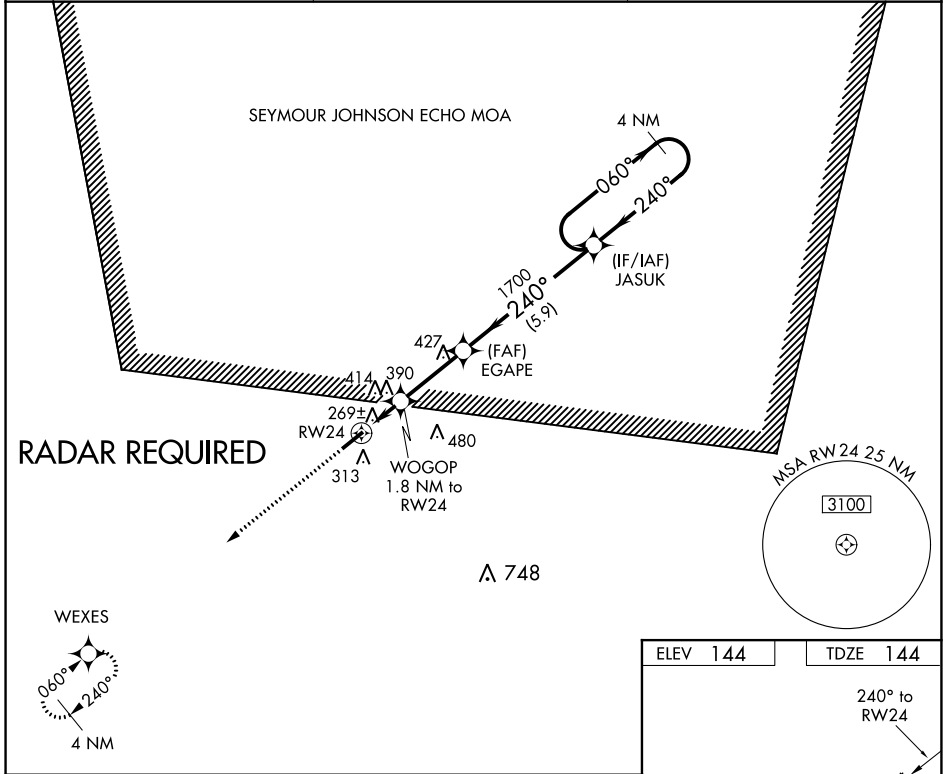
# RNAV (GPS) Y RWY 24

CLINTON-SAMPSON COUNTY (CTZ)

**⚠** Rwy 24 helicopter visibility reduction below 1 SM NA. Straight-in Rwy 24 NA at night, Circling Rwy 24 NA at night. DME/DME RNP-0.3 NA. When local altimeter setting not received, use Kenansville altimeter setting and increase all MDA 60 feet, increase LNAV, LP and Circling Cats C and D visibility ¼ mile.

**⚠** MISSED APPROACH: Climb to 2500 direct WEXES and hold.

AWOS-3 <b>119.125</b>	FAYETTEVILLE APP CON <b>133.0 290.25</b>	UNICOM <b>122.8 (CTAF)</b>
--------------------------	---	-------------------------------



CATEGORY	A	B	C	D
LP MDA	520-1 376 (400-1)			
LNAV MDA	640-1 496 (500-1)		640-1¾ 496 (500-1¾)	
CIRCLING	680-1 536 (600-1)		780-2 636 (700-2)	

SE-2, 22 APR 2021 to 20 MAY 2021

SE-2, 22 APR 2021 to 20 MAY 2021