

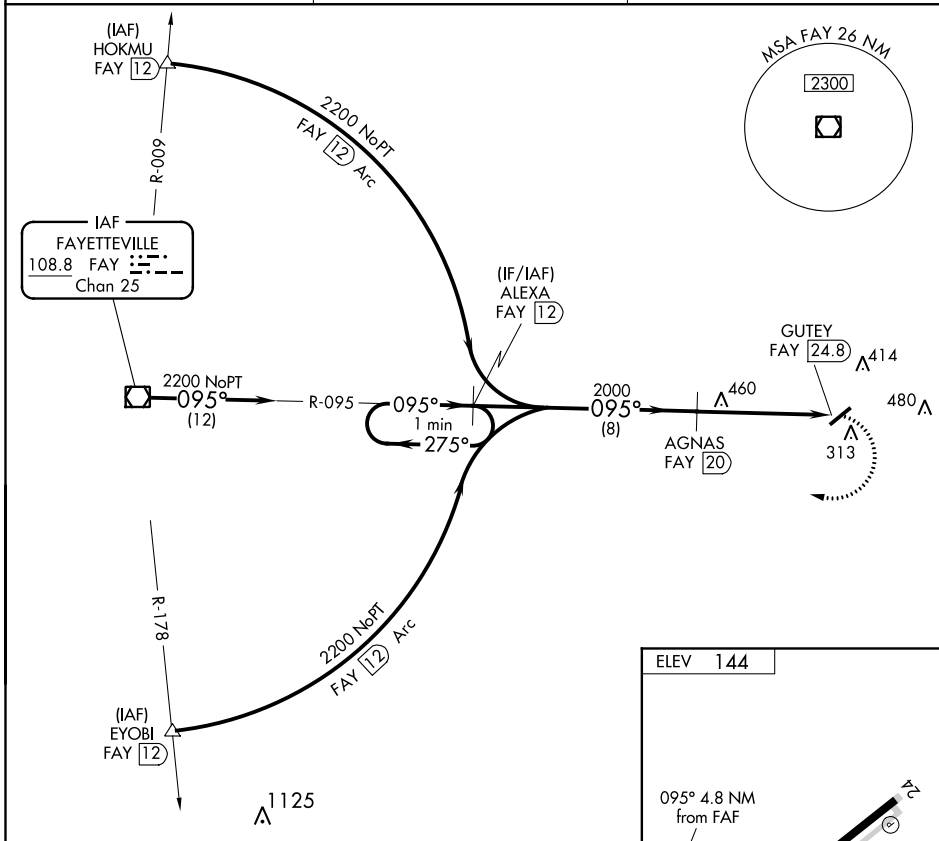
VOR/DME	FAY	APP CRS	Rwy Idg	N/A
<b>108.8</b>		<b>095°</b>	TDZE	N/A
Chan 25			Apt Elev	144

**VOR/DME-A**  
CLINTON-SAMPSON COUNTY (CTZ)

When local altimeter setting not received, use Kenansville altimeter setting and increase all MDA 60 feet, and increase Circling Cats C/D visibility ¼ mile. Circling to Rwy 24 NA at night. Helicopter visibility reduction below 1 SM NA.

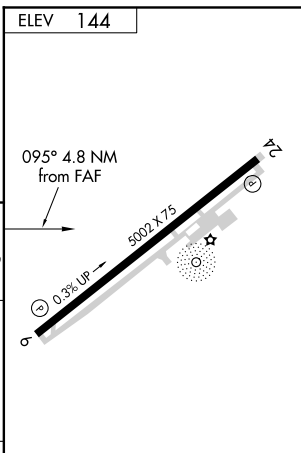
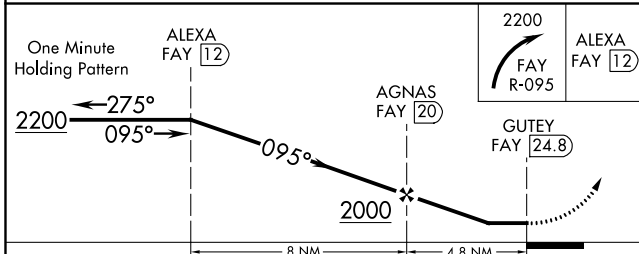
MISSED APPROACH: Climbing right turn to 2200 on FAY VOR/DME R-095 to ALEXA/FAY 12 DME and hold.

AWOS-3 <b>119.125</b>	FAYETTEVILLE APP CON <b>133.0 290.25</b>	UNICOM <b>122.8 (CTAF)</b>
--------------------------	---	-------------------------------



SE-2, 22 APR 2021 to 20 MAY 2021

SE-2, 22 APR 2021 to 20 MAY 2021



CATEGORY	A	B	C	D
CIRCLING	760-1 616 (700-1)	760-1¼ 616 (700-1¼)	780-1¾ 636 (700-1¾)	780-2 636 (700-2)

MIRL Rwy 6-24  
REIL Rws 6 and 24