

WAAS CH 61234 W23A	APP CRS 232°	Rwy Idg TDZE 1523 Apt Elev 1545	5506
--	------------------------	---	-------------

RNAV (GPS) RWY 23

SCOTT MUNI (SCX)

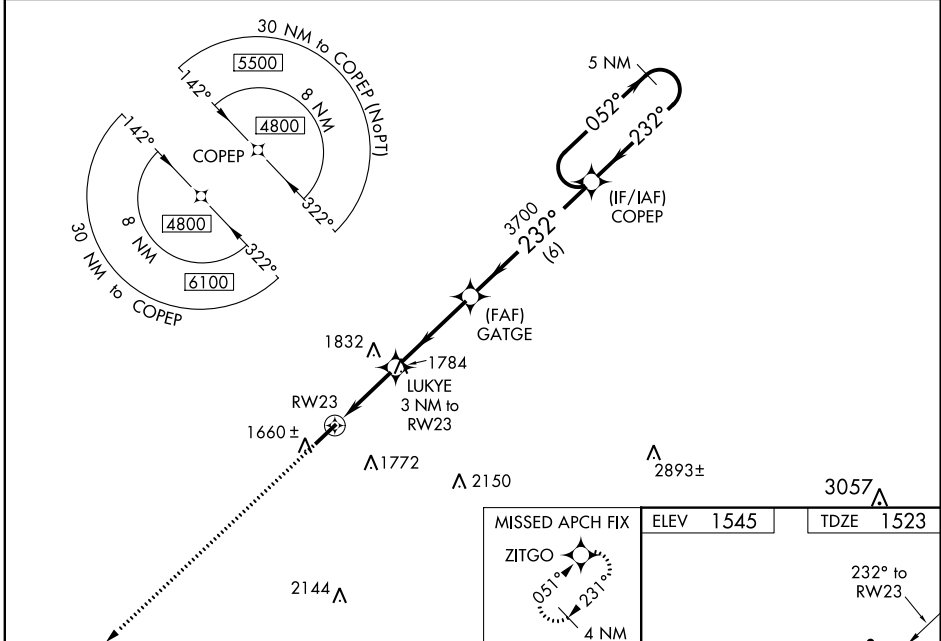
▼
▲NA

Night landing: Rwy 5 NA. For uncompensated Baro-VNAV systems, LNAV/VNAV NA below -18°C (0°F) or above 54°C (130°F). DME/DME RNP-0.3 NA. When local altimeter setting not received, use Monticello altimeter setting: increase LPV all Cats DA to 2005 feet, LNAV/VNAV all Cats DA to 2153 feet, LPV visibility ½ mile, LNAV/VNAV ⅓ mile; increase all MDA 240 feet and LNAV Cat C/D visibility ⅓ mile, Circling Cat B ¼ mile, Circling Cat C 1 mile and Circling Cat D ¾ mile. Inop table does not apply to LPV and LNAV all Cats. For inop ODALS, increase LNAV/VNAV Cat D visibility to 1 ⅓ mile. For inop ODALS when using Monticello altimeter setting, increase LPV all Cats visibility to 1 ⅓ mile, LNAV/VNAV all Cats to 2 ½ mile. When using Monticello altimeter setting, inop table does not apply to LNAV Cats A/C/D. VDP and Baro-VNAV NA when using Monticello altimeter setting.

ODALS

MISSED APPROACH:
Climb to 3900 direct ZITGO and hold.

AWOS-3 135.025	INDIANAPOLIS CENTER 124.625 371.925	UNICOM 122.8 (CTAF)
--------------------------	---	-------------------------------



SE-1, 22 APR 2021 to 20 MAY 2021

SE-1, 22 APR 2021 to 20 MAY 2021

3900 ↑	ZITGO	ELEV 1545	TDZE 1523
*LNAV only. RW23 → *1.5 NM to RW23 → *2500 → 3700 → 4800 *1.5 NM to RW23		COPEP Holding Pattern 5 NM 052° → 4800 ← 232° GP 3.00° TCH 52	
CATEGORY	A	B	C
LPV DA	1773-1		250 (300-1)
LNAV/DA VNAV	1921-1 ½		398 (400-1 ½)
LNAV MDA	2040-1	517 (500-1)	2040-1 ⅓ 517 (500-1 ⅓)
CIRCLING	2040-1	495 (500-1)	2200-1 ¼ 2260-2 ¼ 655 (700-1 ¼) 715 (800-2 ¼)

MRL Rwy 5-23
REIL Rws 5 and 23