


LOC/DME I-OAJ 108.7 Chan 24	APP CRS 052°	Rwy Idg TDZE Apt Elev	7100 89 93
---	------------------------	-----------------------------	---------------------------------------

ILS or LOC RWY 5

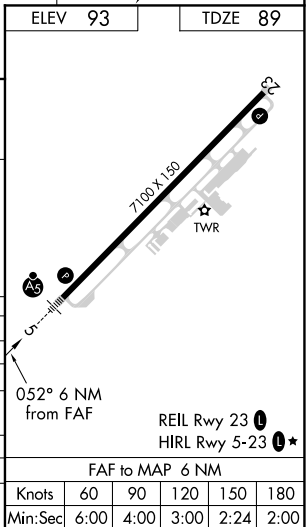
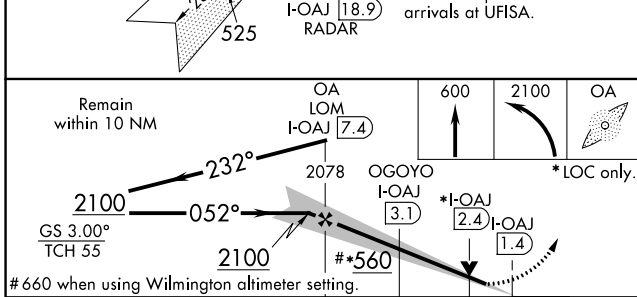
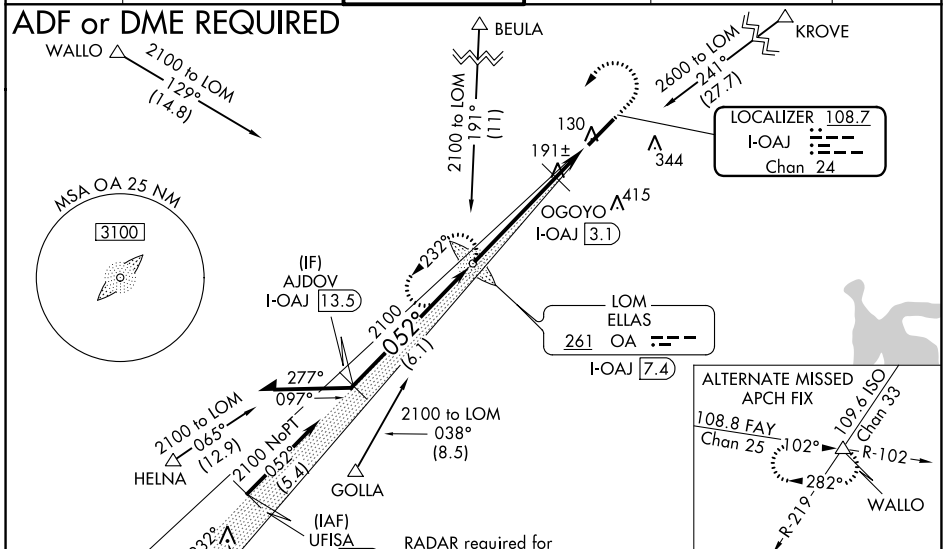
ALBERT J ELLIS (OAJ)

VDP NA with Wilmington altimeter setting. When local altimeter setting not received, use Wilmington altimeter setting and increase all DA 93 feet and all MDA 100 feet, increase S-LOC 5 Cats C/D visibility ¼ mile, increase Circling Cat C visibility ½ mile; increase OGOYO fix minimums, S-LOC 5 Cats C/D visibility ¾ mile. For inoperative MALSR, increase S-LOC 5 Cats C/D visibility to 1 ¾ mile, increase OGOYO fix minimums S-LOC 5 Cats C/D visibility to 1 mile. For inoperative MALSR when using Wilmington altimeter setting, increase S-ILS 5 all Cats visibility to ¾ mile, increase S-LOC 5 Cats C/D visibility to 1 ¾ mile, increase OGOYO fix minimums S-LOC 5 Cats C/D visibility to 1 ¾ mile. ADF required.

MALSRL

MISSED APPROACH:
 Climb to 600 then climbing left turn to 2100 direct ELLAS LOM/I-OAJ 7.4 DME and hold.

ATIS 124.475	WILMINGTON APP CON * 135.75 317.425	ELLIS TOWER * 132.65 (CTAF) 	GND CON 125.4	CLNC DEL 121.4 257.6 (when twr closed)	UNICOM 122.95
------------------------	---	---	-------------------------	---	-------------------------

ADF or DME REQUIRED



CATEGORY	A	B	C	D
S-ILS 5	289-½ 200 (200-½)			
S-LOC 5	560-½	471 (500-½)	560-1	471 (500-1)
CIRCLING	560-1	467 (500-1)	560-1½ 467 (500-1½)	660-2 567 (600-2)
OGOYO FIX MINIMUMS (DME REQUIRED)				
S-LOC 5	460-½	371 (400-½)	460-¾	371 (400-¾)
CIRCLING	500-1 407 (500-1)	560-1 467 (500-1)	560-1½ 467 (500-1½)	660-2 567 (600-2)

FAF to MAP 6 NM					
Knots	60	90	120	150	180
Min:Sec	6:00	4:00	3:00	2:24	2:00

SE-2, 22 APR 2021 to 20 MAY 2021

SE-2, 22 APR 2021 to 20 MAY 2021