

WAAS CH 62827 W23A	APP CRS 232°	Rwy Idg TDZE Apt Elev	7100 93 93
--	------------------------	-----------------------------	---------------------------------------

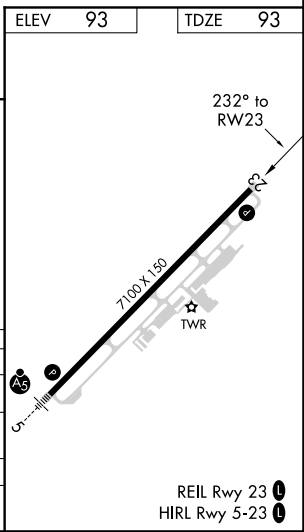
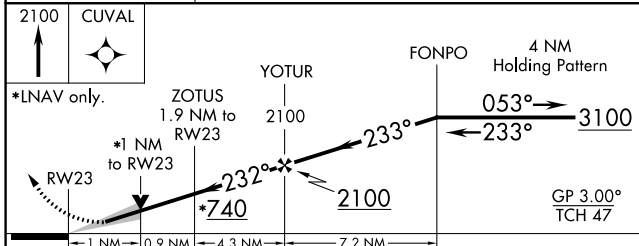
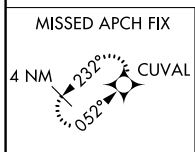
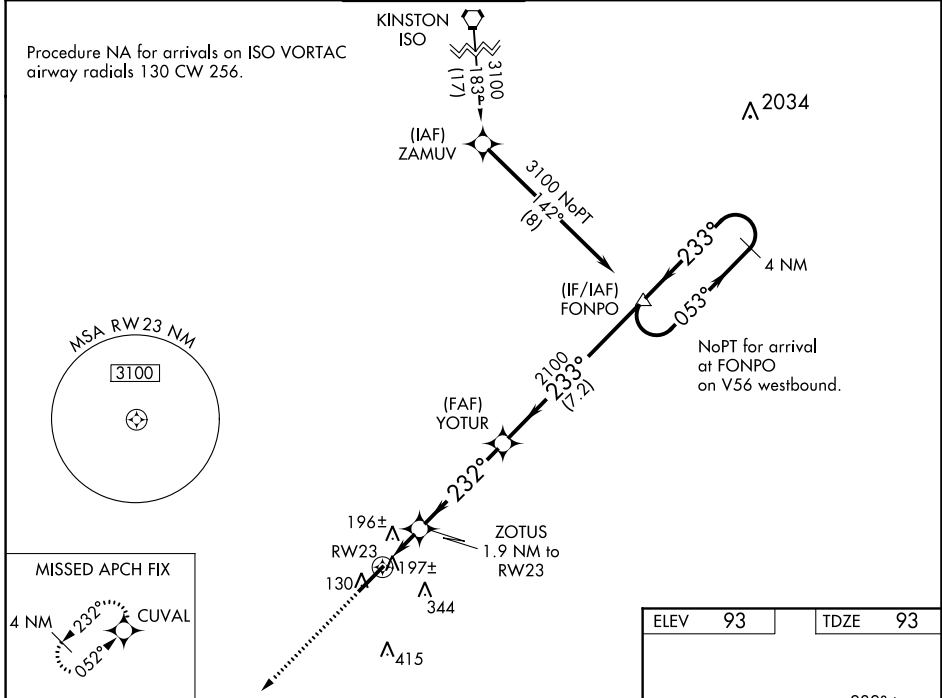
RNAV (GPS) RWY 23

ALBERT J ELLIS (O.A.J)

Baro-VNAV NA when using Wilmington altimeter setting. For uncompensated Baro-VNAV systems, LNAV/VNAV NA below -15°C (5°F) or above 43°C (109°F). DME/DME RNP-0.3 NA. VDP NA with Wilmington altimeter setting. When local altimeter setting not received, use Wilmington altimeter setting and increase all DA 93 feet and all MDA 100 feet, increase LPV all Cats visibility ¼ mile, and LNAV/VNAV all Cats and LNAV Cats C/D visibility ⅓ mile.

MISSED APPROACH:
Climb to 2100 direct CUVAL and hold.

ATIS 124.475	WILMINGTON APP CON ★ 135.75 317.425	ELLIS TOWER ★ 132.65 (CTAF)	GND CON 125.4	CLNC DEL 121.4 257.6 (when twr closed)	UNICOM 122.95
------------------------	---	---------------------------------------	-------------------------	---	-------------------------



CATEGORY	A	B	C	D
LPV DA		293-¾	200 (200-¾)	
LNAV/ VNAV DA		497-1⅜	404 (500-1⅜)	
LNAV MDA		460-1	367 (400-1)	
CIRCLING	500-1 407 (500-1)	560-1 467 (500-1)	560-1½ 467 (500-1½)	660-2 567 (600-2)

SE-2, 22 APR 2021 to 20 MAY 2021

SE-2, 22 APR 2021 to 20 MAY 2021