


WAAS CH <b>49009</b> <b>W05A</b>	APP CRS <b>052°</b>	Rwy Idg TDZE Apt Elev	<b>7100</b> <b>89</b> <b>93</b>
--	------------------------	-----------------------------	---------------------------------------

# RNAV (GPS) RWY 5

ALBERT J ELLIS (O.A.J)

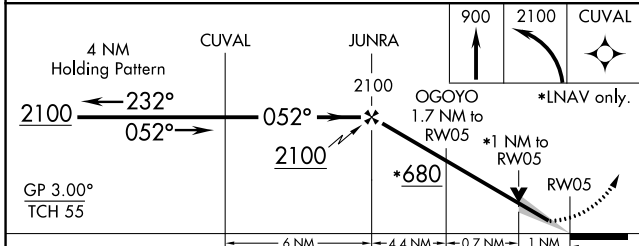
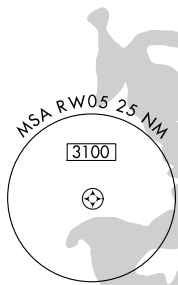
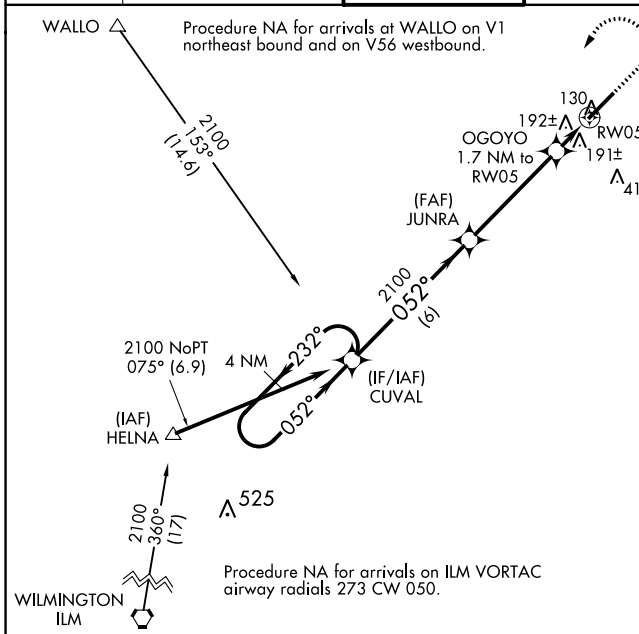
Baro-VNAV NA when using Wilmington altimeter setting. For uncompensated Baro-VNAV systems, LNAV/VNAV NA below -1.5°C (5°F) or above 43°C (109°F). DME/DME RNP -0.3 NA. VDP NA with Wilmington altimeter setting. When local altimeter setting not received, use Wilmington altimeter setting and increase all DA 93 feet and all MDA 100 feet, increase LNAV/VNAV all Cats and LNAV Cats C/D visibility 3/8 mile. For inoperative MALSRS, increase LNAV Cat C/D visibility to 1 mile. For inoperative MALSRS, when using Wilmington altimeter setting, increase LPV all Cats visibility to 3/8 mile, increase LNAV/VNAV all Cats to 1 1/2 mile, and LNAV Cat C/D to 1 3/8 mile.

MALSRS



MISSED APPROACH:  
Climb to 900 then climbing left turn to 2100 direct CUVAL and hold.

ATIS <b>124.475</b>	WILMINGTON APP CON ★ <b>135.75 317.425</b>	ELLIS TOWER ★ <b>132.65 (CTAF)</b>	GND CON <b>125.4</b>	CLNC DEL <b>121.4 257.6</b> (when twr closed)	UNICOM <b>122.95</b>
------------------------	---	---------------------------------------	-------------------------	---	-------------------------



ELEV 93	TDZE 89
---------	---------

REIL Rwy 23

HIRL Rwy 5-23

CATEGORY	A	B	C	D
LPV DA		289-1/2	200 (200-1/2)	
LNAV/ VNAV DA		465-3/4	376 (400-3/4)	
LNAV MDA	460-1/2	371 (400-1/2)	460-5/8	371 (400-5/8)
CIRCLING	500-1 407 (500-1)	560-1 467 (500-1)	560-1 1/2 467 (500-1 1/2)	660-2 567 (600-2)

SE-2, 22 APR 2021 to 20 MAY 2021

SE-2, 22 APR 2021 to 20 MAY 2021