

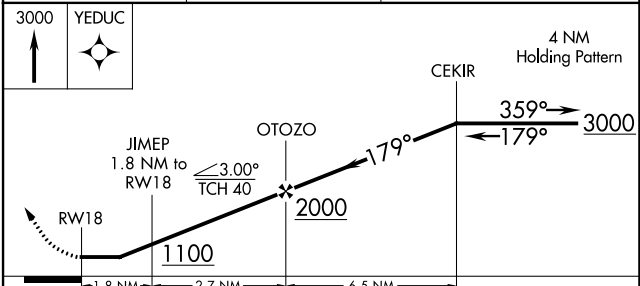
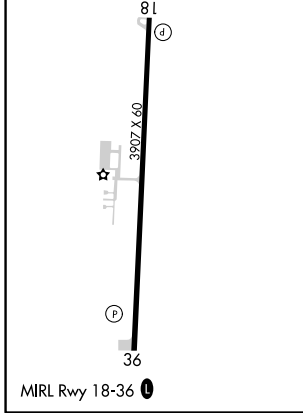
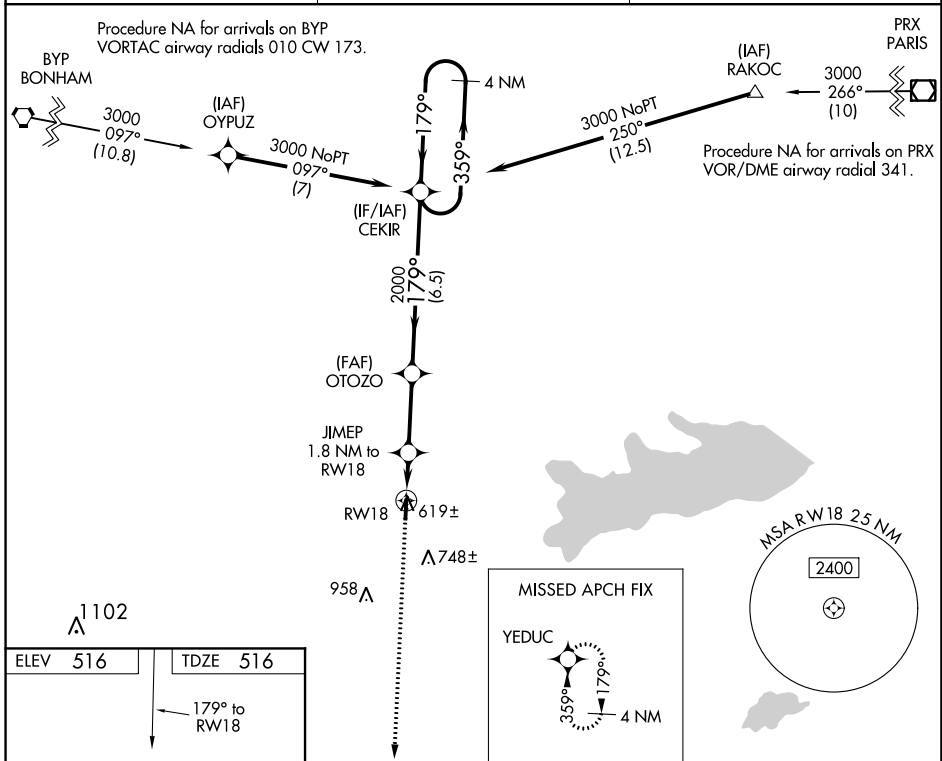
APP CRS	Rwy Idg	<b>3907</b>
<b>179°</b>	TDZE	<b>516</b>
	Apt Elev	<b>516</b>

# RNAV (GPS) RWY 18

COMMERCE MUNI (2F7)

<b>▼</b> <b>▲</b> NA	DME/DME RNP-0.3 NA. Rwy 18 helicopter visibility reduction below 3/4 SM NA. Use Greenville altimeter setting, when not received, use Sulphur Springs altimeter setting and increase all MDAs 20 feet.	MISSED APPROACH: Climb to 3000 direct YEDUC and hold.
-------------------------	---	--

GVT AWOS-3 <b>133.425</b>	FORT WORTH CENTER <b>127.6 254.3</b>	CTAF <b>122.9</b>
------------------------------	---	----------------------



CATEGORY	A	B	C	D
LNAV MDA	920-1	404 (500-1)	NA	
CIRCLING	960-1 444 (500-1)	1100-1 584 (600-1)	NA	

SC-2, 22 APR 2021 to 20 MAY 2021

SC-2, 22 APR 2021 to 20 MAY 2021