

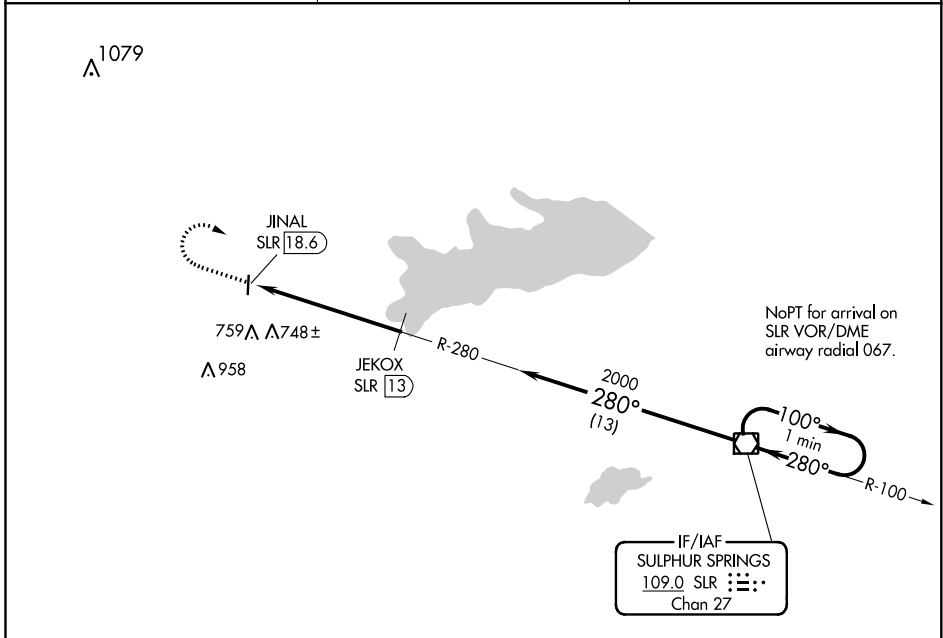
VOR/DME SLR <b>109.0</b> Chan <b>27</b>	APP CRS <b>280°</b>	Rwy Idg TDZE Apt Elev <b>N/A</b> <b>516</b>
---	------------------------	--

**VOR-A**  
COMMERCE MUNI (2F7)

**▽** **△** NA Use Greenville altimeter setting; when not received, use Sulphur Springs altimeter setting. DME required.

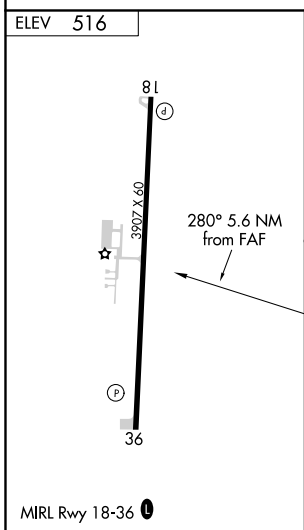
MISSED APPROACH: Climb to 2200 then right turn direct SLR VOR/DME and hold.

GVT AWOS-3 <b>133.425</b>	FORT WORTH CENTER <b>127.6 254.3</b>	CTAF <b>122.9</b>
------------------------------	---	----------------------



SC-2, 22 APR 2021 to 20 MAY 2021

SC-2, 22 APR 2021 to 20 MAY 2021



2200	SLR	JEKOX SLR 13	SLR VOR/DME	One Minute Holding Pattern
↑	↷	□	□	
JINAL SLR 18.6	2000	280°	100° → 2000	← 280°
5.6 NM	13 NM			
CATEGORY	A	B	C	D
CIRCLING	1180-1	664 (700-1)		NA