

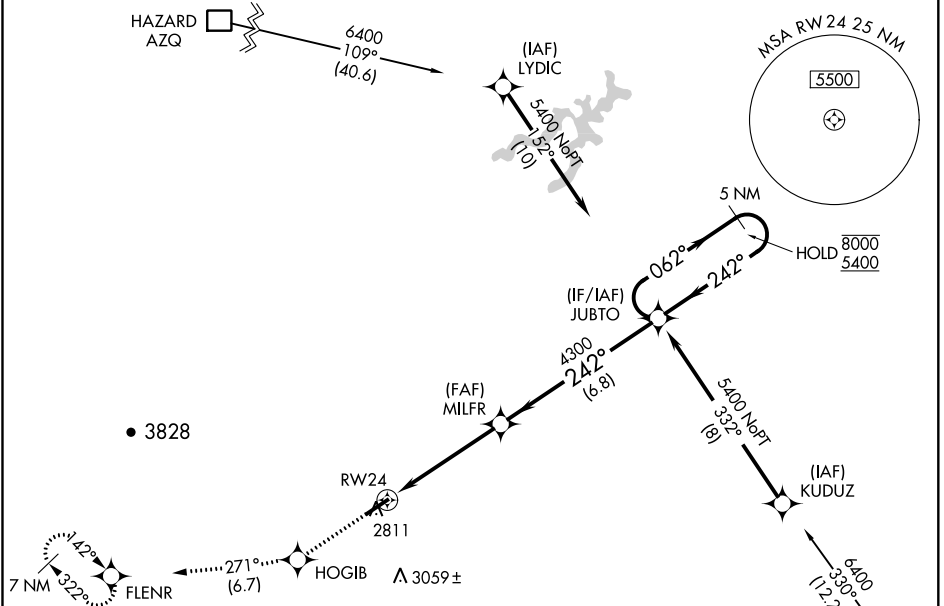
WAAS CH 77602 W24A	APP CRS 242°	Rwy ldg TDZE Apt Elev	5280 2684 2684
--	------------------------	-----------------------------	---

RNAV (GPS) RWY 24

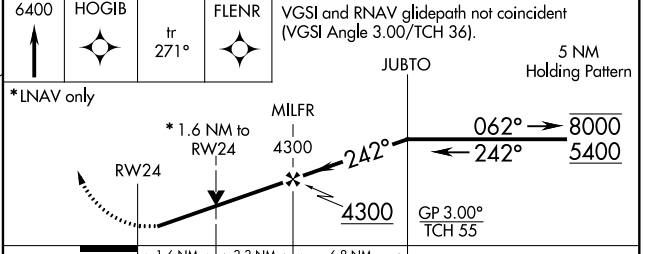
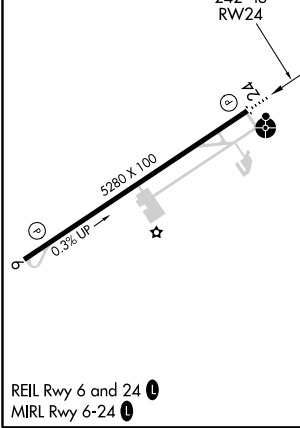
LONESOME PINE (LNP)

RNP APCH.	ODALS	MISSED APPROACH: Climb to 6400 direct HOGIB and on track 271° to FLENR and hold, continue climb-in-hold to 6400.
<p>⚠ Circling to Rwy 6 NA at night. Rwy 24 helicopter visibility reduction below 3/4 SM NA.</p> <p>⚠ For uncompensated Baro-VNAV systems, LNAV/VNAV NA below -20°C or above 54°C.</p> <p>Inop table does not apply to LPV all Cats and LNAV Cats A/B. For inop ALS, increase LNAV/VNAV Cat A/B visibility to 1 1/4 SM and LNAV Cat C/D visibility to 1 3/8 SM.</p>		

AWOS-3 118.6	INDIANAPOLIS CENTER 126.575 253.5	UNICOM 123.0 (CTAF)
------------------------	---	-------------------------------



ELEV 2684	TDZE 2684
------------------	------------------



	A	B	C	D
CATEGORY				
LPV DA		2962-1	278 (300-1)	
LNAV/VNAV DA		3112-1 1/8	428 (500-1 1/8)	
LNAV MDA	3140-1	456 (500-1)	3140-1 1/8	456 (500-1 1/8)
CIRCLING	3240-1	3360-1	3360-2	3560-2 3/4
	556 (600-1)	676 (700-1)	676 (700-2)	876 (900-2 3/4)

NE-3, 22 APR 2021 to 20 MAY 2021

NE-3, 22 APR 2021 to 20 MAY 2021