

APP CRS 066°	Rwy Idg TDZE Apt Elev	5280 2671 2684
------------------------	-----------------------------	---

RNAV (GPS) RWY 6

LONESOME PINE (LNP)

RNP APCH.

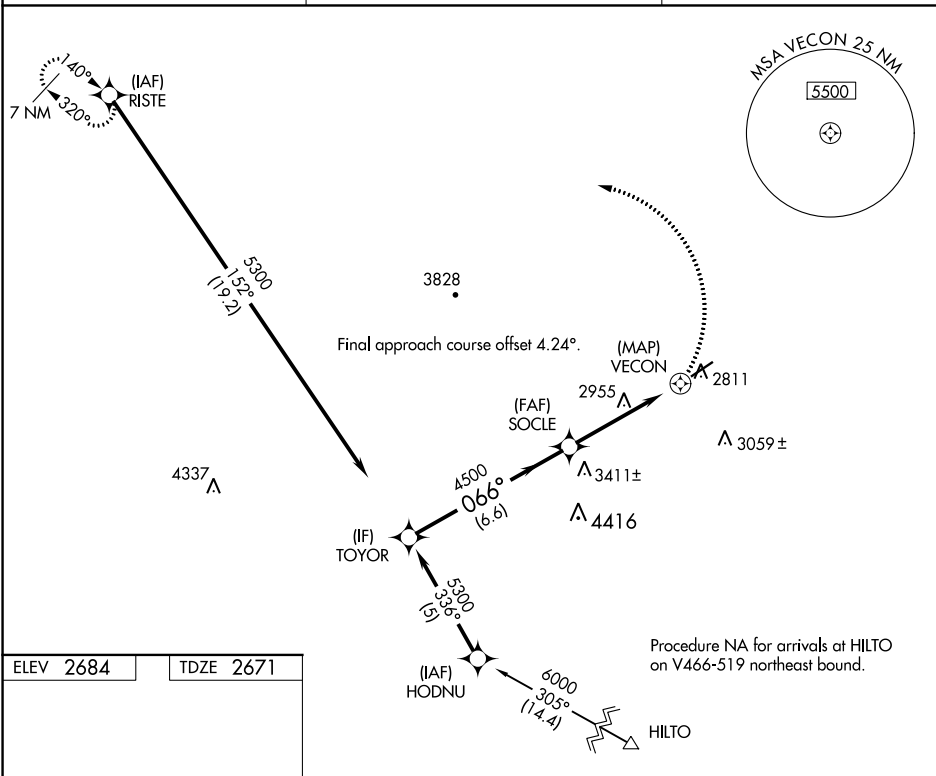
- Procedure NA at night.
- Rwy 6 helicopter visibility reduction below 1 SM NA.

MISSED APPROACH: Climbing left turn to 6400 direct RISTE and hold.

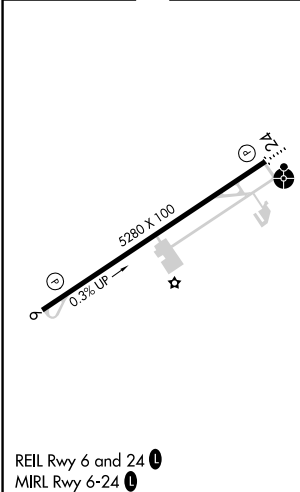
AWOS-3
118.6

INDIANAPOLIS CENTER
126.575 253.5

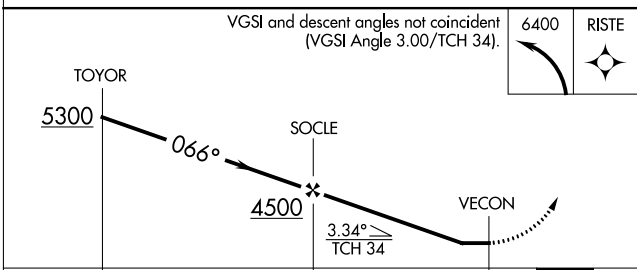
UNICOM
123.0 (CTAF)



ELEV 2684	TDZE 2671
-----------	-----------



REIL Rwy 6 and 24
MIRL Rwy 6-24



VGSI and descent angles not coincident (VGSI Angle 3.00/TCH 34).	6400	RISTE		
CATEGORY	A	B	C	D
LNAV MDA	3260-1	589 (600-1)	3260-1¾	589 (600-1¾)
CIRCLING	3260-1 576 (600-1)	3360-1 676 (700-1)	3360-2 676 (700-2)	3560-2¾ 876 (900-2¾)

NE-3, 22 APR 2021 to 20 MAY 2021

NE-3, 22 APR 2021 to 20 MAY 2021