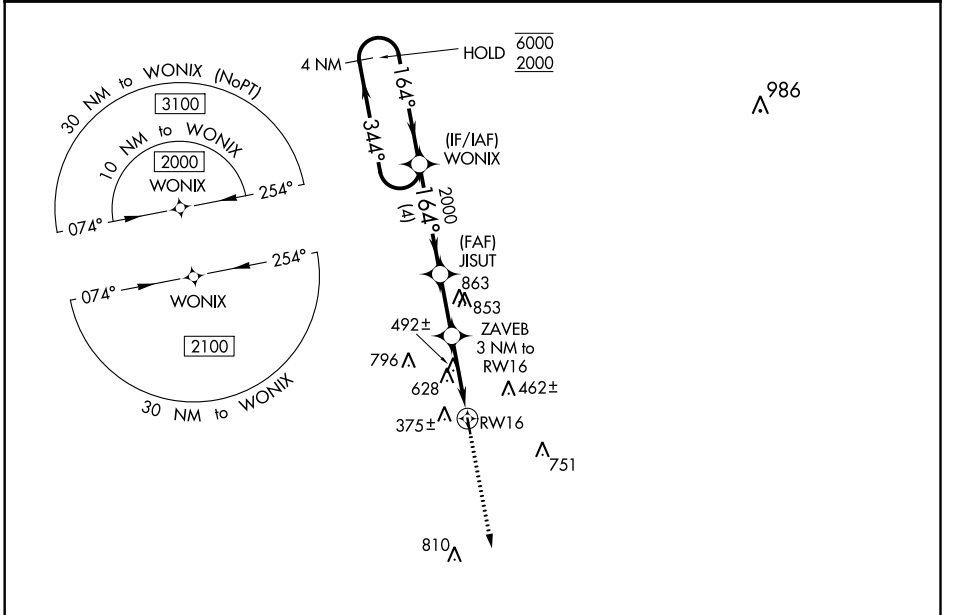


WAAS CH 87125 W16A	APP CRS 164°	Rwy Idg TDZE Apt Elev	3218 289 289
--	------------------------	-----------------------------	---

RNAV (GPS) RWY 16

KENEDY RGNL (2R.9)

RNP APCH.		MISSED APPROACH: Climb to 2000 direct FORLU and hold.
Procedure NA at night. When local altimeter setting not received, use Pleasanton altimeter setting. Rwy 16 helicopter visibility reduction below 1 SM NA.		
AWOS 3-PT 118.45	HOUSTON CENTER 134.6 322.5	UNICOM 123.0 (CTAF) 0



SC-3, 22 APR 2021 to 20 MAY 2021

SC-3, 22 APR 2021 to 20 MAY 2021

