

(ESTRR4.ESTRR) 19003

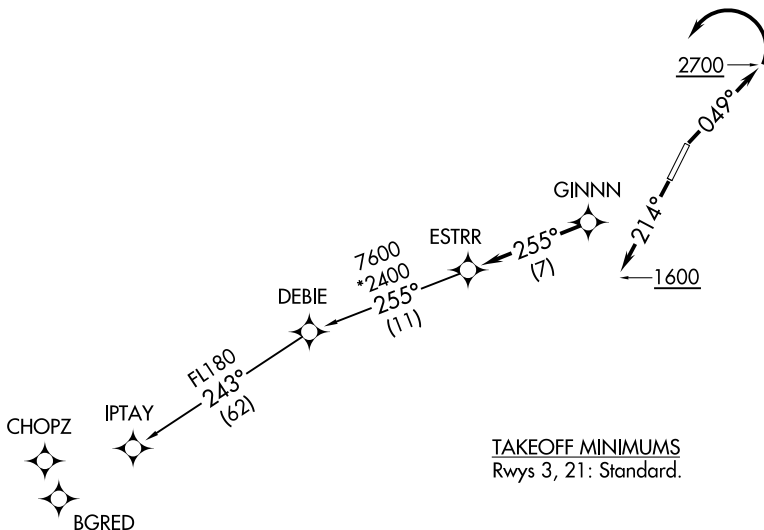
AL-6081 (FAA)

# ESTRR FOUR DEPARTURE (RNAV)

GASTONIA MUNI (AKH)  
GASTONIA, NORTH CAROLINA

ASOS  
135.725  
CLNC DEL  
127.2  
UNICOM (CTAF)  
123.0  
CHARLOTTE DEP CON  
120.05 257.2

**TOP ALTITUDE:  
3000**



TAKEOFF MINIMUMS  
Rwys 3, 21: Standard.

- NOTE: For turbojets only.
- NOTE: DME/DME/IRU or GPS required.
- NOTE: RNAV 1.
- NOTE: RADAR required.
- NOTE: If unable to accept climb rates, advise ATC on initial contact.
- NOTE: Upon reaching 10000 MSL, accelerate to and maintain 280K, if unable advise ATC.

NOTE: Chart not to scale.

## DEPARTURE ROUTE DESCRIPTION

TAKEOFF RWY 3: Climb heading 049° to 2700 before turning left.  
TAKEOFF RWY 21: Climb heading 214° to 1600 before proceeding north.

Climb on heading assigned by ATC, expect RADAR vectors to GINNN, then on track 255° to ESTRR, then on IPTAY transition. Maintain 3000, expect clearance to filed altitude within 10 minutes after departure.

IPTAY TRANSITION (ESTRR4.IPTAY)

**ESTRR FOUR DEPARTURE (RNAV)**  
(ESTRR4.ESTRR) 03JAN19

GASTONIA, NORTH CAROLINA  
GASTONIA MUNI (AKH)

SE-2, 22 APR 2021 to 20 MAY 2021

SE-2, 22 APR 2021 to 20 MAY 2021