

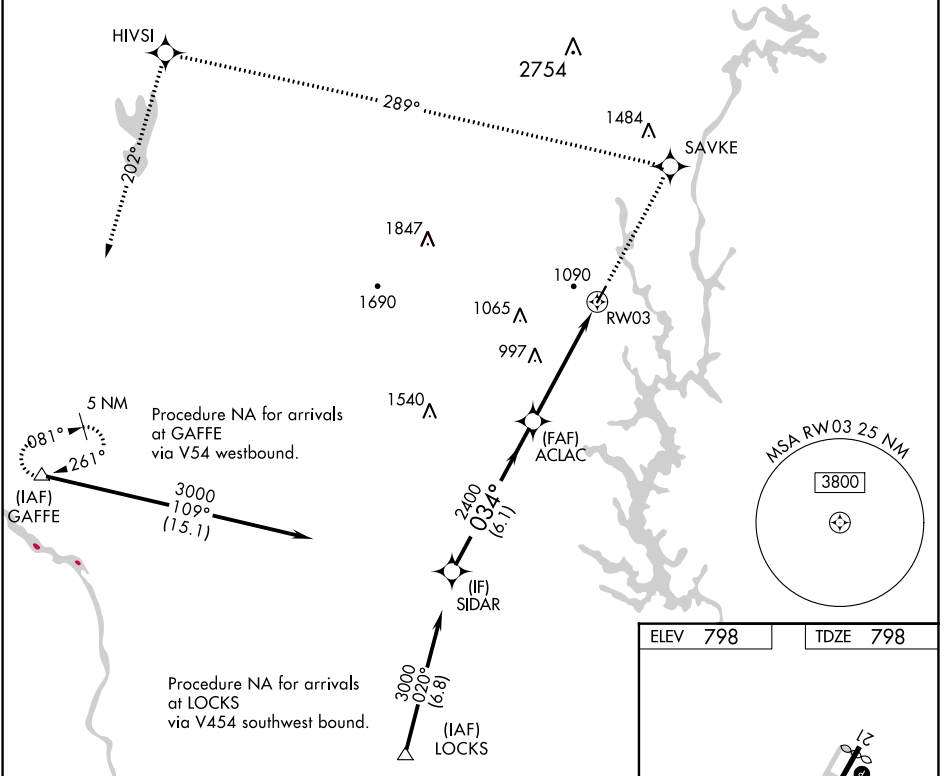
WAAS CH <b>90302</b> <b>W03A</b>	APP CRS <b>034°</b>	Rwy Idg TDZE Apt Elev	<b>3770</b> <b>798</b> <b>798</b>
--	------------------------	-----------------------------	---

# RNAV (GPS) RWY 3

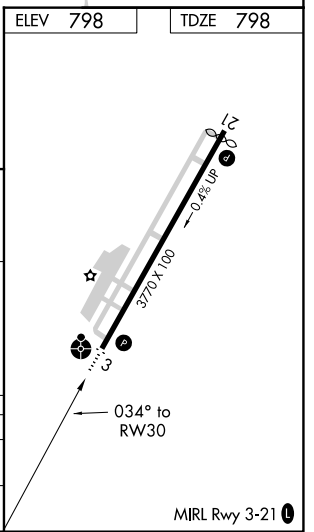
GASTONIA MUNI (AKH)

RNP APCH. ▼ If local altimeter setting not received, use Charlotte Douglas Intl altimeter setting and increase all DAs/MDAs 40 feet. Inoperative table does not apply.	ODALS ☉ ⋮	MISSED APPROACH: Climb to 3200 direct SAVKE and via 289° track to HIVSI and 202° track to GAFFE and hold.
---	--------------	---

ASOS <b>135.725</b>	CHARLOTTE APP CON <b>120.05 257.2</b>	CLNC DEL <b>127.2</b>	UNICOM <b>123.0 (CTAF) 0</b>
------------------------	--	--------------------------	---------------------------------



VGSi and RNAV glidepath not coincident (VGSi Angle 3.00/TCH 26).				
Procedure Turn NA	SIDAR	3200 SAVKE	HIVSI	GAFFE
		↑	☉ tr 289°	☉ tr 202°
GP 3.00° TCH 40	3000	034°	2400	RW03
			☉	☉
	6.1 NM	4.8 NM		
CATEGORY	A	B	C	D
LPV DA	1118-1¼	320 (400-1¼)		NA
LNAV MDA	1440-1	642 (700-1)	1440-1¾ 642 (700-1¾)	NA



SE-2, 22 APR 2021 to 20 MAY 2021

SE-2, 22 APR 2021 to 20 MAY 2021