

APP CRS	Rwy Idg	5001
173°	TDZE	892
	Apt Elev	892

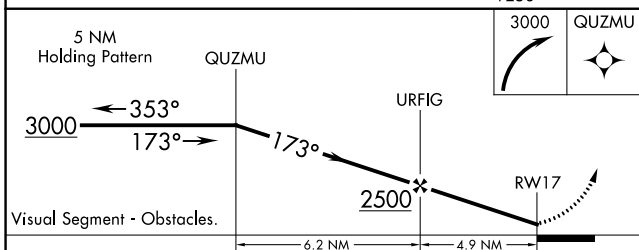
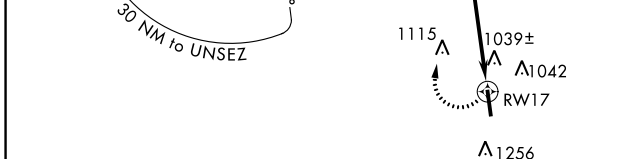
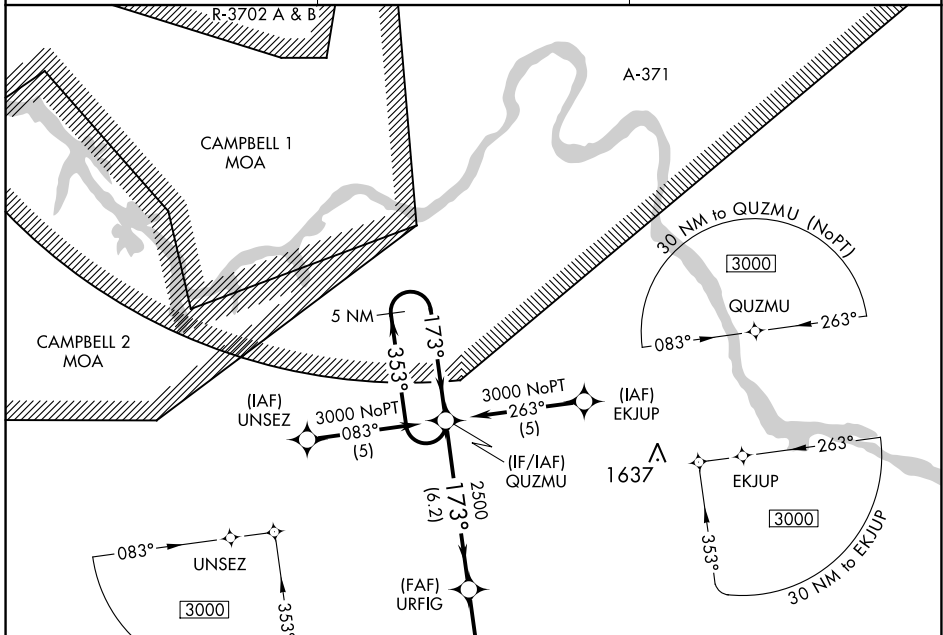
RNAV (GPS) RWY 17

DICKSON MUNI (M02)

⚠ Night Landing: Rwy 35 NA. DME/DME RNP-0.3 NA. Helicopter visibility reduction below ¼ SM NA. When local altimeter setting not received, use Nashville Intl altimeter setting and increase all MDA 140 feet and increase LNAV Cat C and Circling Cat B visibility ¼ mile and LNAV Cat D and Circling Cat C/D ½ mile.

MISSED APPROACH: Climbing right turn to 3000 direct QUZMU and hold.

AWOS-3 123.875	MEMPHIS CENTER 125.85 379.25	UNICOM 122.8 (CTAF)
--------------------------	--	-------------------------------



ELEV 892	TDZE 892
----------	----------

173° to RWY 17

3001 X 75

35

REIL Rwy 17 and 35
MIRL Rwy 17-35

CATEGORY	A	B	C	D
LNAV MDA	1300-1	408 (500-1)	1300-1½	408 (500-1½)
C CIRCLING	1420-1 528 (600-1)	1560-1 668 (700-1)	1560-1¾ 668 (700-1¾)	1560-2 668 (700-2)

SE-1, 22 APR 2021 to 20 MAY 2021

SE-1, 22 APR 2021 to 20 MAY 2021