

WAAS CH <b>42524</b> <b>W10A</b>	APP CRS <b>096°</b>	Rwy Idg TDZE Apt Elev	<b>3013</b> <b>237</b> <b>237</b>
--	------------------------	-----------------------------	---

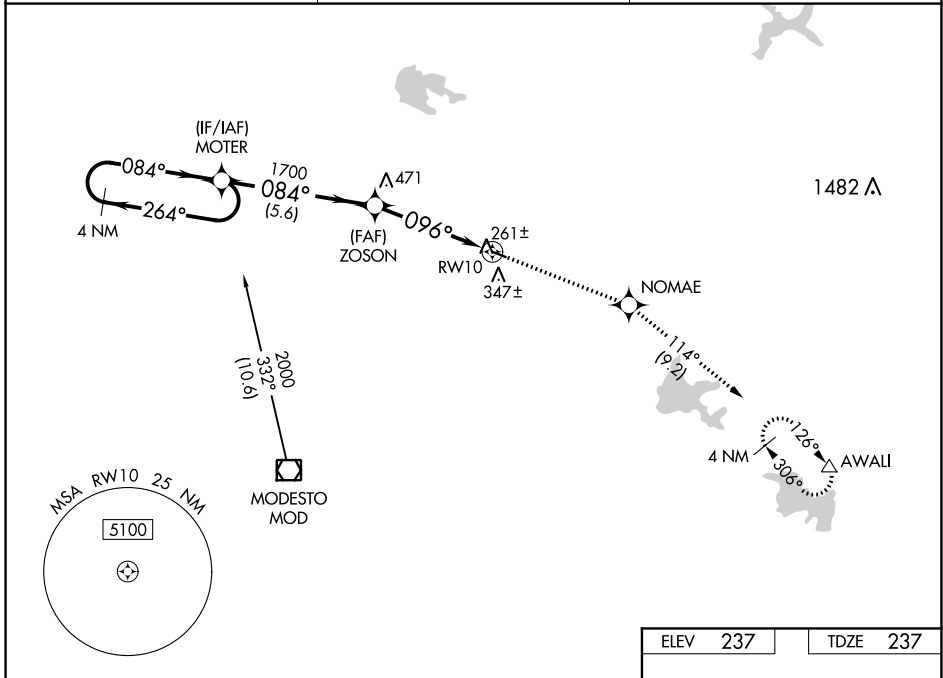
# RNAV (GPS) RWY 10

OAKDALE (O27)

**Baro-VNAV NA. DME/DME RNP-0.3 NA.**  
**NA** Use Modesto altimeter setting; when not received, use Stockton altimeter setting and increase all DA 36 feet and all MDA 40 feet; increase LPV and LNAV/VNAV all Cats and LNAV Cat C visibility 1/8 SM.

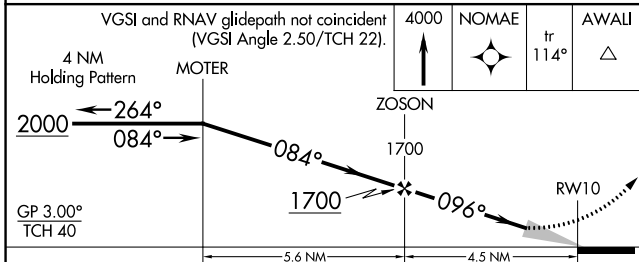
**MISSED APPROACH:** Climb to 4000 direct NOMAE and on track 114° to AWALI and hold, continue climb-in-hold to 4000.

MOD ASOS <b>127.7</b>	NORCAL APP CON <b>125.1 363.2</b>	UNICOM <b>122.8 (CTAF)</b>
--------------------------	--------------------------------------	-------------------------------



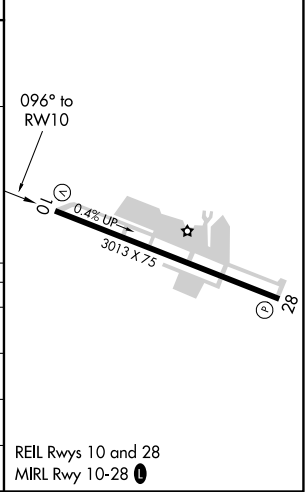
SW-2, 22 APR 2021 to 20 MAY 2021

SW-2, 22 APR 2021 to 20 MAY 2021



ELEV	237	TDZE	237
------	-----	------	-----

CATEGORY	A	B	C	D
LPV DA	531-1 294 (300-1)			NA
LNAV/VNAV DA	555-1 1/8 318 (400-1 1/8)			NA
LNAV MDA	760-1 523 (600-1)	760-1 1/2 523 (600-1 1/2)		NA
<b>C</b> CIRCLING	760-1 523 (600-1)	820-1 583 (600-1)	920-2 683 (700-2)	NA



REIL Rwy 10 and 28  
MIRL Rwy 10-28