

WAAS CH 70523 W28A	APP CRS 277°	Rwy Idg 3013 TDZE 237 Apt Elev 237
--	------------------------	---

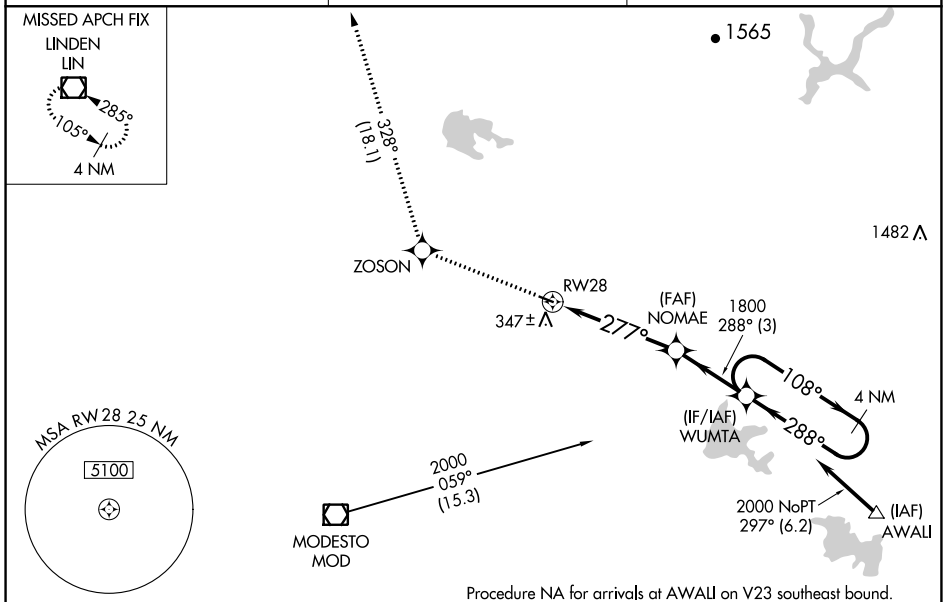
RNAV (GPS) RWY 28

OAKDALE (O27)

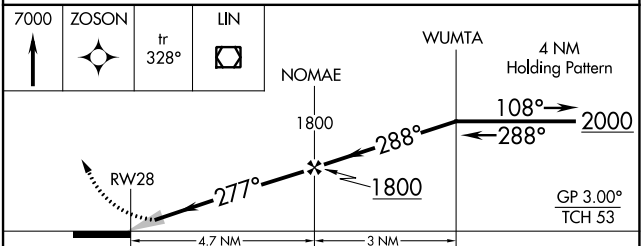
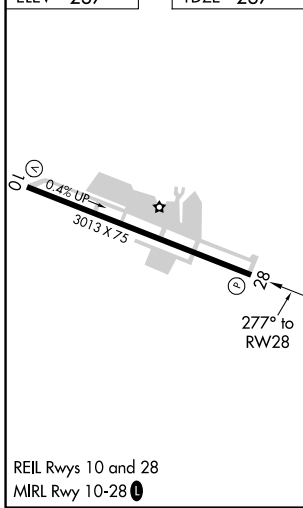
NA Baro-VNAV NA. DME/DME RNP-0.3 NA. Use Modesto altimeter setting; when not received, use Stockton altimeter setting and increase LPV DA to 567 feet and all visibilities $\frac{1}{4}$ SM; increase LNAV/VNAV DA to 570 feet and all visibilities $\frac{1}{8}$ SM; increase all MDAs 40 feet.

MISSED APPROACH: Climb to 7000 direct ZOSON and on track 328° to LIN VOR/DME and hold, continue climb-in-hold to 7000.

MOD ASOS 127.7	NORCAL APP CON 125.1 363.2	UNICOM 122.8 (CTAF)
--------------------------	--------------------------------------	-------------------------------



ELEV 237	TDZE 237
----------	----------



CATEGORY	A	B	C	D
LPV DA	531- $\frac{7}{8}$	294 (300- $\frac{7}{8}$)		NA
LNAV/VNAV DA	534-1	297 (300-1)		NA
LNAV MDA	820-1	583 (600-1)	820-1 $\frac{3}{4}$ 583 (600-1 $\frac{3}{4}$)	NA
C CIRCLING	820-1	583 (600-1)	920-2 683 (700-2)	NA

SW-2, 22 APR 2021 to 20 MAY 2021

SW-2, 22 APR 2021 to 20 MAY 2021