

WAAS CH 70527 W18A	APP CRS 182°	Rwy Idg TDZE Apt Elev	4000 698 698
--	------------------------	-----------------------------	---

RNAV (GPS) RWY 18

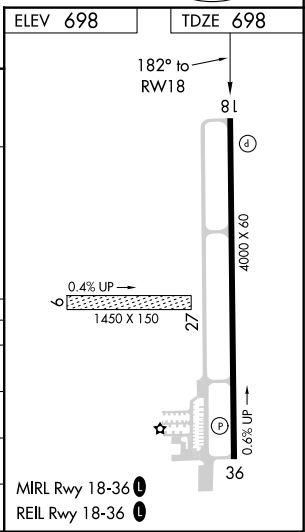
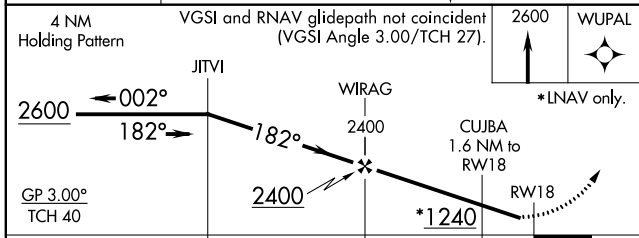
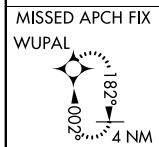
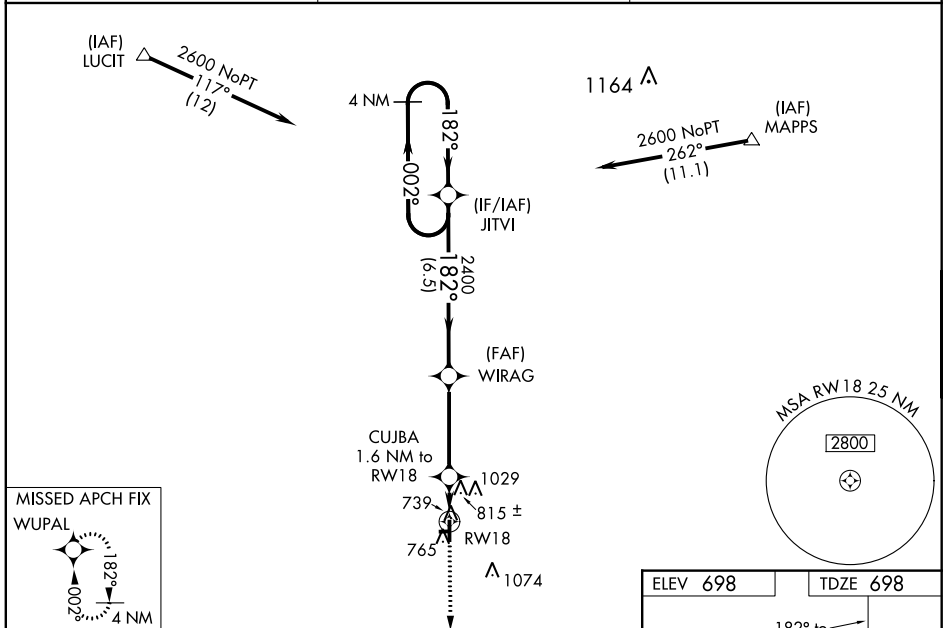
JASPER COUNTY (R.Z.L.)

RNP APCH.

⚠ Baro-VNAV NA when using Knox altimeter setting. For uncompensated Baro-VNAV systems LNAV/VNAV NA below -22°C or above 54°C. When local altimeter setting not received, use Knox altimeter setting and increase all DA 78 feet and all MDA 80 feet. Increase LPV all Cats visibility ¼ mile, LNAV-VNAV all Cats and LNAV and Circling Cat C visibility ½ mile. Rwy 18 helicopter visibility reduction below 1 SM NA. Circling NA to Rwys 9 and 27.

MISSED APPROACH:
Climb to 2600 direct WUPAL and hold.

AWOS-3P 119.175	CHICAGO CENTER 132.5 284.7	UNICOM 122.8 (CTAF) 0
---------------------------	--------------------------------------	---------------------------------



CATEGORY	A	B	C	D
LPV DA	948-1 250 (300-1)			NA
LNAV/VNAV DA	1096-1⅓ 398 (400-1⅓)			NA
LNAV MDA	1080-1	382 (400-1)	1080-1⅓ 382 (400-1⅓)	NA
CIRCLING	1120-1 422 (500-1)	1340-1 642 (700-1)	1340-1⅓ 642 (700-1⅓)	NA

EC-2, 22 APR 2021 to 20 MAY 2021

EC-2, 22 APR 2021 to 20 MAY 2021