

LOC/DME I-EXX <b>108.75</b> Chan 24(Y)	APP CRS <b>058°</b>	Rwy Idg <b>5004</b> TDZE <b>733</b> Apt Elev <b>733</b>
--	------------------------	---

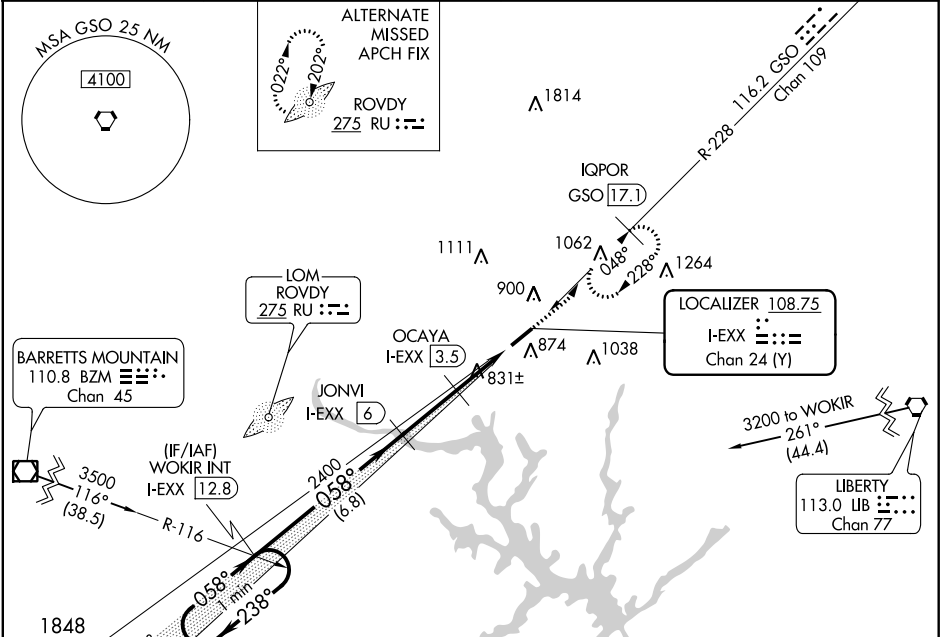
# ILS or LOC RWY 6

DAVIDSON COUNTY (E.XX)

**VDP NA** with Salisbury altimeter setting. When local altimeter setting not received, use Salisbury altimeter setting and increase all DA 37 feet and all MDA 40 feet; increase S-ILS 6 all Cats and S-LOC 6 Cat C visibility 1/8 mile. DME required. Rwy 6 helicopter visibility reduction below 3/4 SM NA.

**MALSR** MISSED APPROACH: Climb to 1200 then climbing left turn to 2600 on heading 052° and GSO VORTAC R-228 to IQPOR/GSO 17.1 DME and hold.

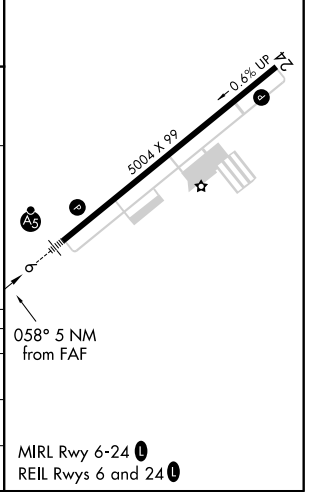
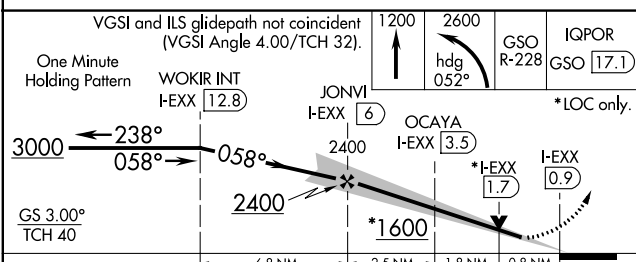
AWOS-3 <b>119.825</b>	GREENSBORO APP CON <b>126.6 327.075</b>	GCO <b>135.075</b>	UNICOM <b>122.8 (CTAF) 0</b>
--------------------------	--	-----------------------	---------------------------------



SE-2, 22 APR 2021 to 20 MAY 2021

SE-2, 22 APR 2021 to 20 MAY 2021

ELEV 733	TDZE 733
----------	----------



CATEGORY	A	B	C	D
S-ILS 6	983-7/8 250 (300-7/8)			NA
S-LOC 6	1120-1	387 (400-1)	1120-1 1/8 387 (400-1 1/8)	NA
CIRCLING	1200-1	467 (500-1)	1220-1 1/2 487 (500-1 1/2)	NA

MIRL Rwy 6-24 0  
REIL Rws 6 and 24 0