

WAAS CH <b>50333</b> <b>W01A</b>	APP CRS <b>013°</b>	Rwy Idg TDZE Apt Elev	<b>3200</b> <b>857</b> <b>858</b>
--	------------------------	-----------------------------	---

# RNAV (GPS) RWY 1

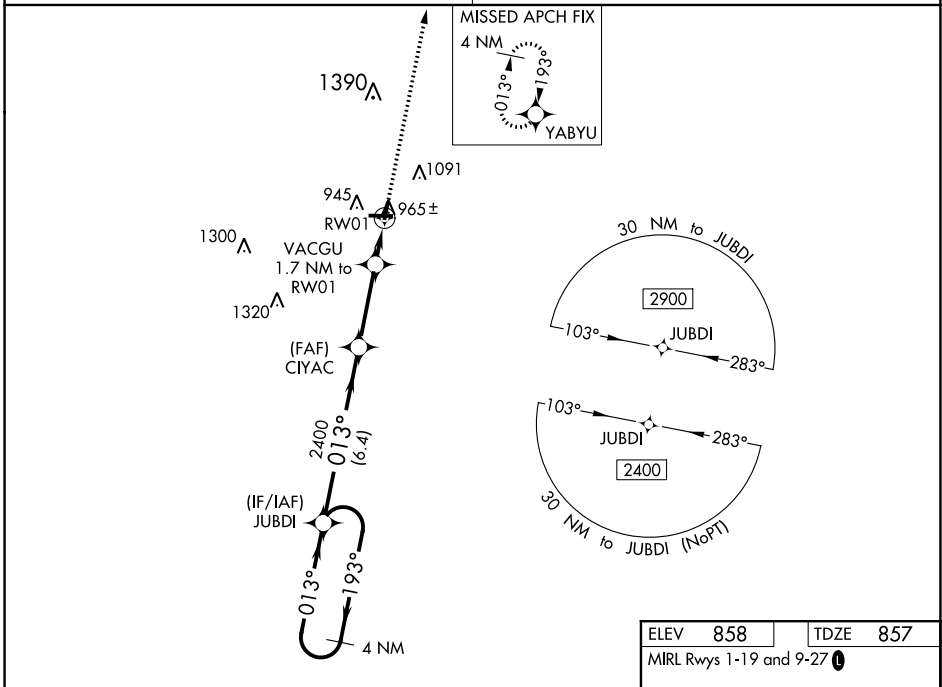
KEWANEE MUNI (EZI)

**▽** Baro-VNAV NA. DME/DME RNP-0.3 NA. Helicopter visibility reduction below ¼ SM NA.  
**△** NA Use Galesburg altimeter setting; when not received, use Moline altimeter setting and increase all DA 29 feet and all MDA 40 feet, increase LPV all Cats visibility ½ mile, and Circling Cat C visibility ¼ mile.

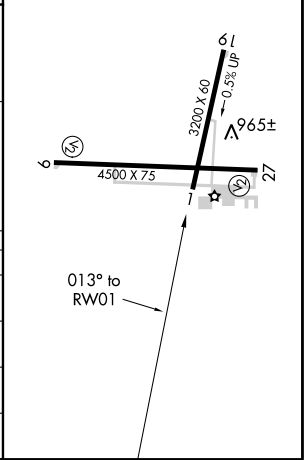
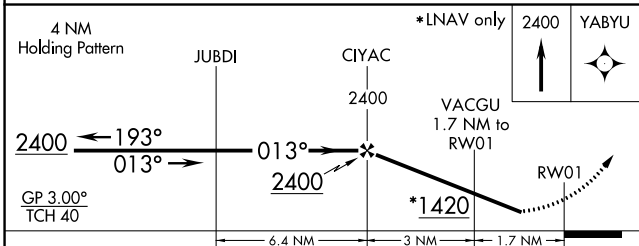
**MISSED APPROACH:**  
 Climb to 2400 direct YABYU and hold.

QUAD CITY APP CON ★  
**133.275 257.8**

UNICOM  
**122.8 (CTAF) ①**



ELEV <b>858</b>	TDZE <b>857</b>
MIRL Rwys 1-19 and 9-27 ①	



CATEGORY	A	B	C	D
LPV DA	1182-1 1/8	325 (400-1 1/8)		NA
LNAV/VNAV DA	1212-1 1/4	355 (400-1 1/4)		NA
LNAV MDA	1300-1	443 (500-1)	1300-1 1/8 443 (500-1 1/8)	NA
<b>C</b> CIRCLING	1340-1 482 (500-1)	1520-1 662 (700-1)	1520-1 1/4 662 (700-1 1/4)	NA

EC-3, 22 APR 2021 to 20 MAY 2021

EC-3, 22 APR 2021 to 20 MAY 2021