

WAAS CH 56433 W27A	APP CRS 273°	Rwy Idg TDZE Apt Elev	4500 858 858
--	------------------------	-----------------------------	---

RNAV (GPS) RWY 27

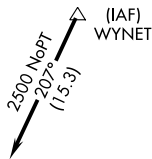
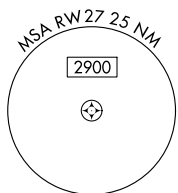
KEWANEE MUNI (EZI)

Baro-VNAV NA. DME/DME RNP-0.3 NA. Use Galesburg altimeter setting; when not received, use Moline altimeter setting and increase all DA 29 feet and all MDA 40 feet, increase LPV all Cats and LNAV Cat C visibility 1/8 mile, and Circling Cat C visibility 1/4 mile.

MISSED APPROACH: Climb to 2400 direct WIKOK and hold.

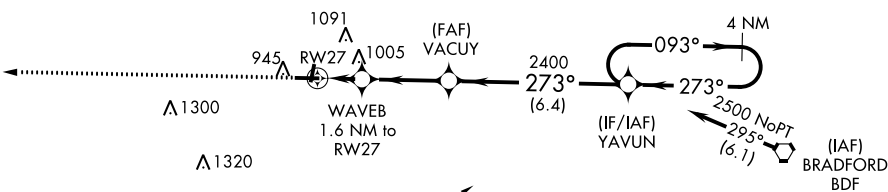
QUAD CITY APP CON *
133.275 257.8

UNICOM
122.8 (CTAF) 0

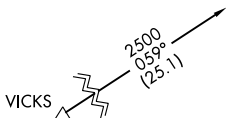
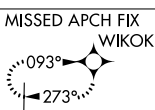


Procedure NA for arrivals at WYNET on V8-38 eastbound.

A1390

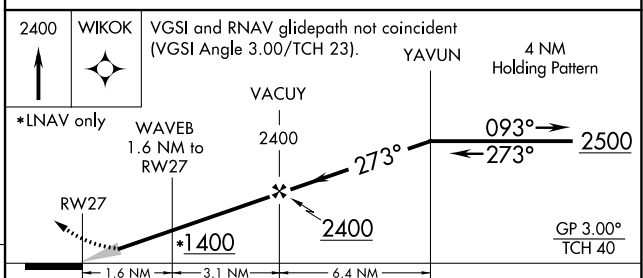
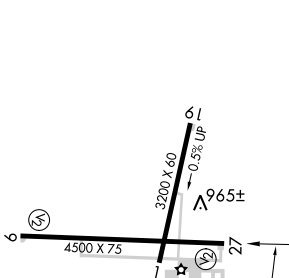


Procedure NA for arrivals at BDF VORTAC on V156 eastbound.



Procedure NA for arrivals at VICKS on V434 northwest bound.

ELEV 858	TDZE 858
----------	----------



CATEGORY	A	B	C	D
LPV DA	1183-1 ¹ / ₈	325 (400-1 ¹ / ₈)		NA
LNAV/VNAV DA	1212-1 ¹ / ₄	354 (400-1 ¹ / ₄)		NA
LNAV MDA	1340-1	482 (500-1)	1340-1 ³ / ₈ 482 (500-1 ³ / ₈)	NA
CIRCLING	1340-1 482 (500-1)	1520-1 662 (700-1)	1520-1 ³ / ₄ 662 (700-1 ³ / ₄)	NA

EC-3, 22 APR 2021 to 20 MAY 2021

EC-3, 22 APR 2021 to 20 MAY 2021