

APP CRS	Rwy Idg	4600
256°	TDZE	88
	Apt Elev	88

RNAV (GPS) RWY 25

LOMPOC (LPC)

RNP APCH.

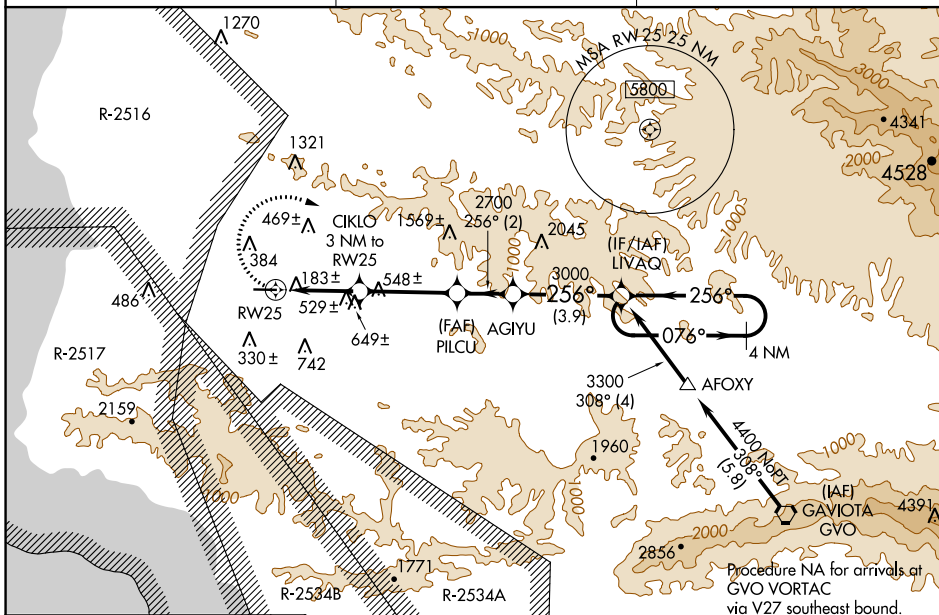
- ▼ When local altimeter setting not received, use Santa Maria Pub/Capt G Allan Hancock Fld altimeter setting and increase all MDA 60 feet, and increase LNAV and Circling Cat B visibility 1/4 SM. Procedure NA at night.

MISSED APPROACH: Climbing right turn to 3300 direct LIVAQ and hold.

AWOS-3PT
133,875

SANTA BARBARA APP CON★
124.15 327.8

UNICOM
122.7 (CTAF) 0



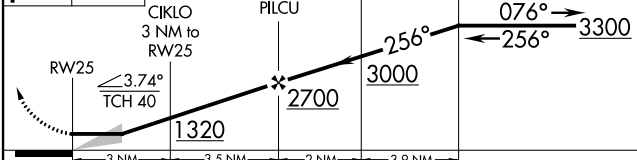
SW-3, 22 APR 2021 to 20 MAY 2021

SW-3, 22 APR 2021 to 20 MAY 2021

ELEV	88	TDZE	88
------	----	------	----



3300	LIVAQ	VGSI and descent angle not coincident (VGSI Angle 3.25/TCH 26).	4 NM Holding Pattern
------	-------	---	----------------------



CATEGORY	A	B	C	D
LNAV MDA	1000-1 1/4	912 (1000-1 1/4)		NA
CIRCLING	1000-1 1/4	912 (1000-1 1/4)		NA

REIL Rwy 25 0
MIRL Rwy 7-25 0