

APP CRS 164°	Rwy Idg TDZE Apt Elev	N/A N/A 22
------------------------	-----------------------------	---------------------------------------

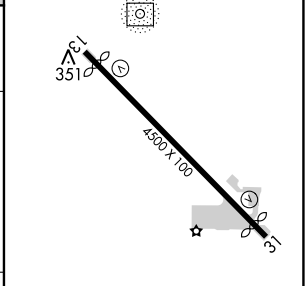
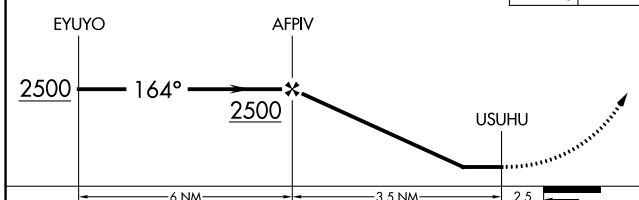
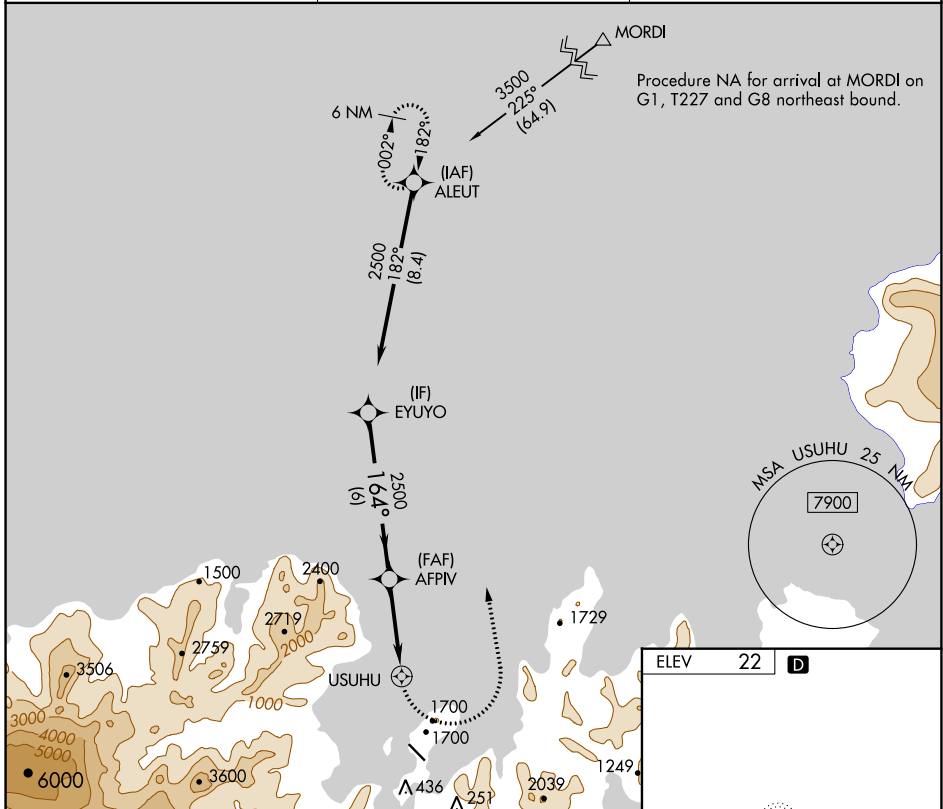
RNAV (GPS)-B

UNALASKA (DUT) (PADU)

⚠ Circling NA northeast of Rwy 13-31. DME/DME RNP-0.3 NA.
⚠ Procedure NA at night. When local altimeter setting not received, use Akutan altimeter setting and increase all MDAs 100 feet.

MISSED APPROACH: Climbing left turn to 3600 direct ALEUT and hold.

AWOS-3P 125.8	ANCHORAGE CENTER 121.4	CTAF 122.6 0 *
-------------------------	----------------------------------	--



CATEGORY	A	B	C	D
C CIRCLING	2000-3	1978 (2000-3)	2320-3 2298 (2300-3)	2500-3 2478 (2500-3)

MIRL Rwy 13-31 **0**
 REIL Rwys 13 and 31 **0**

AK, 22 APR 2021 to 17 JUN 2021

AK, 22 APR 2021 to 17 JUN 2021