

WAAS CH 56236 W23A	APP CRS 234°	Rwy Idg TDZE 265 Apt Elev 265	4460
--	------------------------	---	-------------

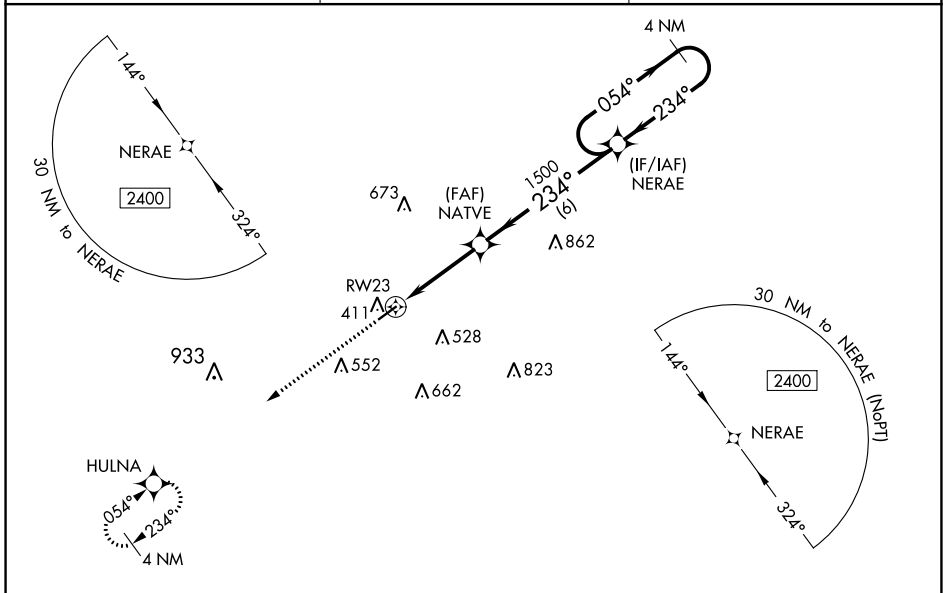
RNAV (GPS) RWY 23

COLUMBIA-MARION COUNTY (ØRØ)

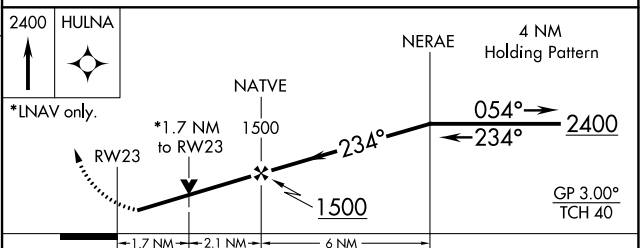
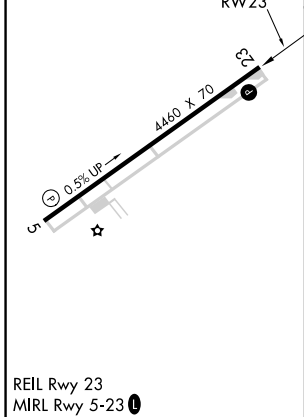
NA For uncompensated Baro-VNAV systems, LNAV/VNAV NA below -15°C (5°F) or above 54°C (130°F). DME/DME RNP-0.3 NA. When local altimeter setting not received, use Hattiesburg-Laurel altimeter setting and increase all DA 66 feet and all MDA 80 feet; increase LPV and LNAV/VNAV all Cats and Circling Cat C visibilities ¼ mile, increase Circling Cat D visibility ½ mile, increase LNAV Cat C and D visibility ½ mile. VDP and Baro-VNAV NA when using Hattiesburg-Laurel altimeter setting. Rwy 23 helicopter visibility reduction below ¾ SM NA.

MISSED APPROACH:
Climb to 2400 direct HULNA and hold.

AWOS-3PT 120.675	HOUSTON CENTER 126.8 327.8	UNICOM 122.8 (CTAF) Ø
----------------------------	--------------------------------------	---------------------------------



ELEV 265	TDZE 265
-----------------	-----------------



CATEGORY	A	B	C	D
LPV DA		534-7/8	269 (300-7/8)	
LNAV/VNAV DA		766-1 3/4	501 (600-1 1/4)	
LNAV MDA	860-1	595 (600-1)	860-1 3/4	595 (600-1 1/4)
C CIRCLING	860-1	595 (600-1)	920-1 3/4	1000-2 1/4
			655 (700-1 1/4)	735 (800-2 1/4)

SC-4, 22 APR 2021 to 20 MAY 2021

SC-4, 22 APR 2021 to 20 MAY 2021