

APP CRS	Rwy Idg	N/A
287°	TDZE	N/A
	Apt Elev	304

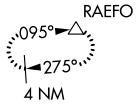
RNAV (GPS)-A

P K AIRPARK (5W4)

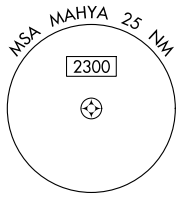
<p>NA</p>	<p>DME/DME RNP-0.3 NA. Procedure NA at night. Use Fayetteville altimeter setting.</p>	<p>MISSED APPROACH: Climbing left turn to 3000 direct RAEFO and hold.</p>
<p>FAYETTEVILLE APP CON 127.8 290.25</p>		<p>UNICOM 123.0 (CTAF)</p>

SE-2, 22 APR 2021 to 20 MAY 2021

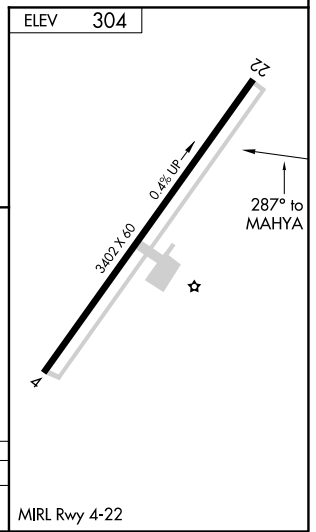
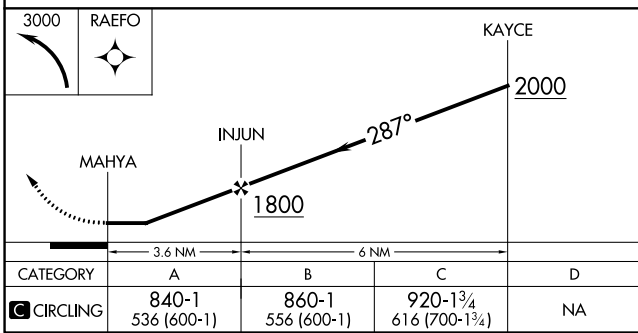
SE-2, 22 APR 2021 to 20 MAY 2021



Procedure NA for arrival on FAY VOR/DME airway radials 225 CW 009.



1249 A



MIRL Rwy 4-22