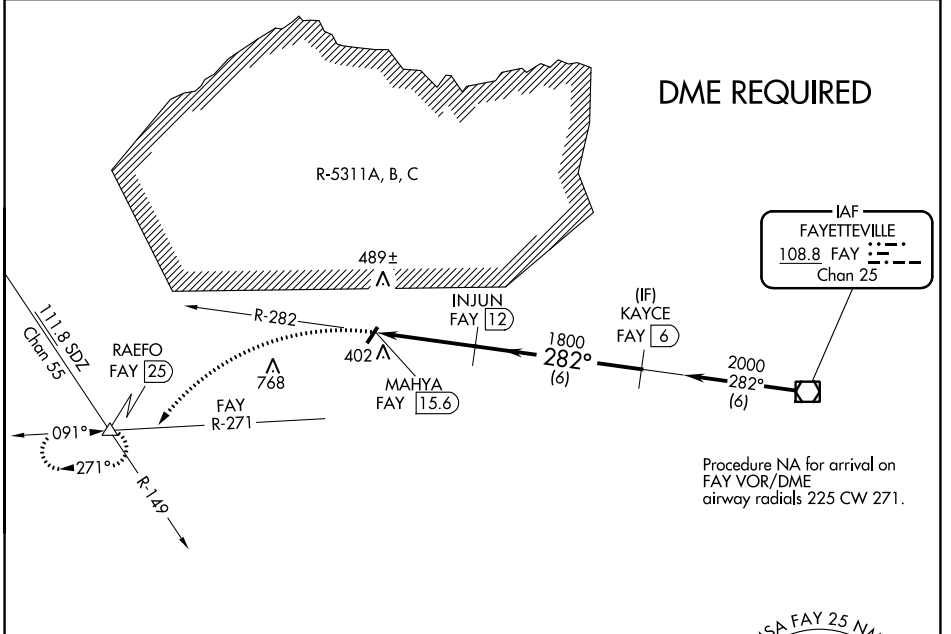


VOR/DME <b>FAY</b> <b>108.8</b> Chan <b>25</b>	APP CRS <b>282°</b>	Rwy Idg TDZE Apt Elev <b>N/A</b> <b>N/A</b> <b>304</b>
--	------------------------	---

**VOR-A**  
P K AIRPARK (5W4)

<p><b>▼</b> DME required. Procedure NA at night. <b>▲</b> NA Use Fayetteville altimeter setting.</p>	<p>MISSED APPROACH: Climbing left turn to 3000 on FAY VOR/DME R-271 to RAEFO/FAY 25 DME and hold.</p>
<p>FAYETTEVILLE APP CON <b>127.8 290.25</b></p>	<p>UNICOM <b>123.0 (CTAF)</b></p>



SE-2, 22 APR 2021 to 20 MAY 2021

SE-2, 22 APR 2021 to 20 MAY 2021

