

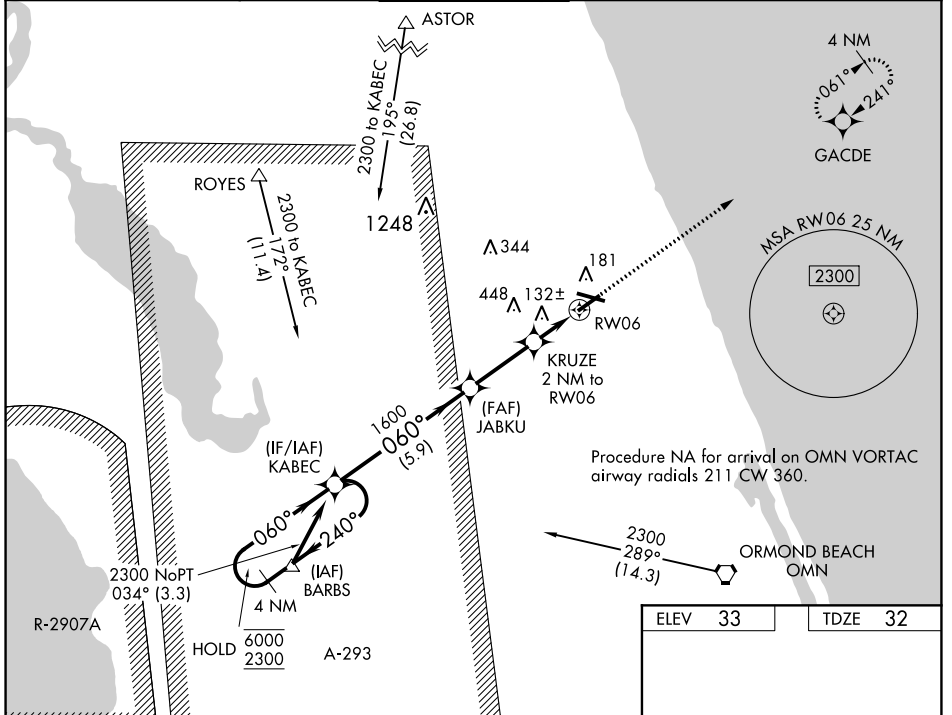
WAAS CH 49209 W06A	APP CRS 060°	Rwy Idg TDZE Apt Elev	5000 32 33
--	------------------------	-----------------------------	---------------------------------------

RNAV (GPS) RWY 6

FLAGLER EXECUTIVE (FIN)

RNP APCH.	MISSED APPROACH: Climb to 2300 direct GACDE and hold.			
▽ Circling Rwy 11, 29 NA at night. For uncompensated Baro-VNAV systems, LNAV/VNAV NA below -15°C or above 54°C. Circling NA to Rwy 18W and 36W.				

ATIS 128.325	DAYTONA APP CON 125.8 269.075	FLAGLER TOWER ★ 118.95 (CTAF) 0	GND CON 121.75	CLNC DEL 121.75	UNICOM 123.0
------------------------	---	---	--------------------------	---------------------------	------------------------



4 NM Holding Pattern		KABEC		2300 GACDE	
6000 ← 240°		JABKU 1600		*LNAV only.	
2300 → 060°		KRUZE 2 NM to RW06		*1 NM to RW06	
GP 3.00° TCH 40		*700		RW06	
← 5.9 NM		← 2.8 NM		1 NM 1 NM	
CATEGORY	A	B	C	D	
LPV DA		282-¾	250 (300-¾)		
LNAV/VNAV DA		282-¾	250 (300-¾)		
LNAV MDA		400-1	368 (400-1)		
C CIRCLING	500-1 467 (500-1)	760-2 727 (800-2)	760-2¼ 727 (800-2¼)		

ELEV 33 TDZE 32

M81
3000 X 500
36W
5500 X 100
5000 X 100
TWR 138
060° to RW06

SE-3, 22 APR 2021 to 20 MAY 2021

SE-3, 22 APR 2021 to 20 MAY 2021