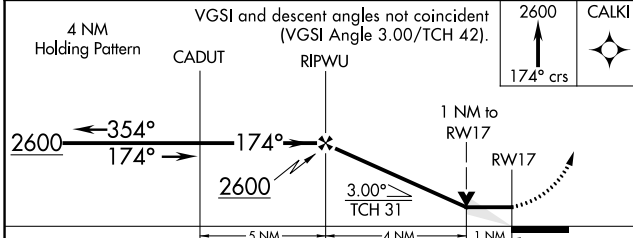
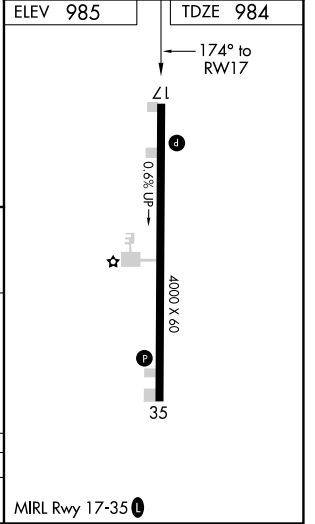
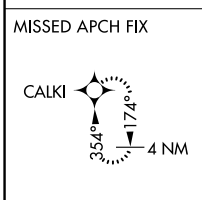
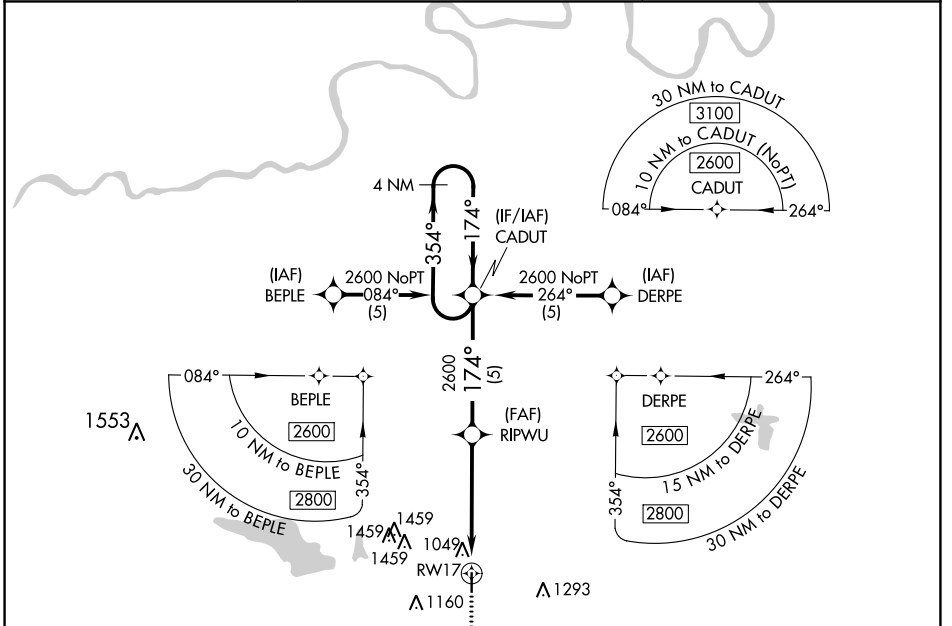


APP CRS <b>174°</b>	Rwy Idg <b>4000</b>
	TDZE <b>984</b>
	Apt Elev <b>985</b>

# RNAV (GPS) RWY 17

CHANDLER RGNL (CQB)

RNP APCH.		MISSED APPROACH: Climb to 2600 via 174° course to CALKI WP and hold.
AWOS-3 <b>119.275</b>	KANSAS CITY CENTER <b>127.8 319.1</b>	CTAF <b>122.9</b>



CATEGORY	A	B	C	D
LNAV MDA	1300-1 316 (400-1)			NA

SC-1, 22 APR 2021 to 20 MAY 2021

SC-1, 22 APR 2021 to 20 MAY 2021