

WAAS CH 77802 W13A	APP CRS 135°	Rwy Idg TDZE Apt Elev	5500 76 76
--	------------------------	-----------------------------	---------------------------------------

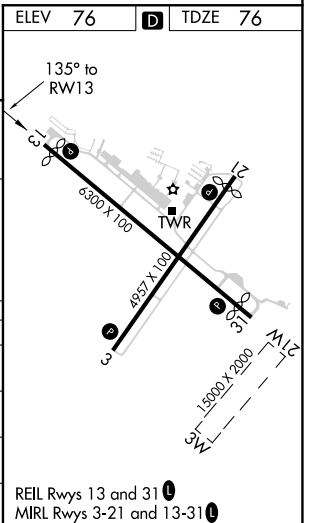
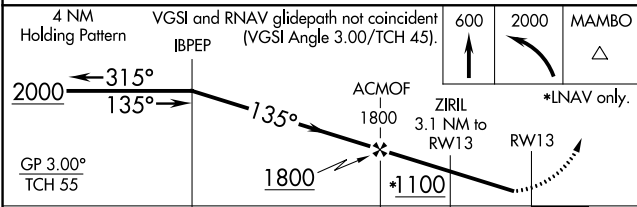
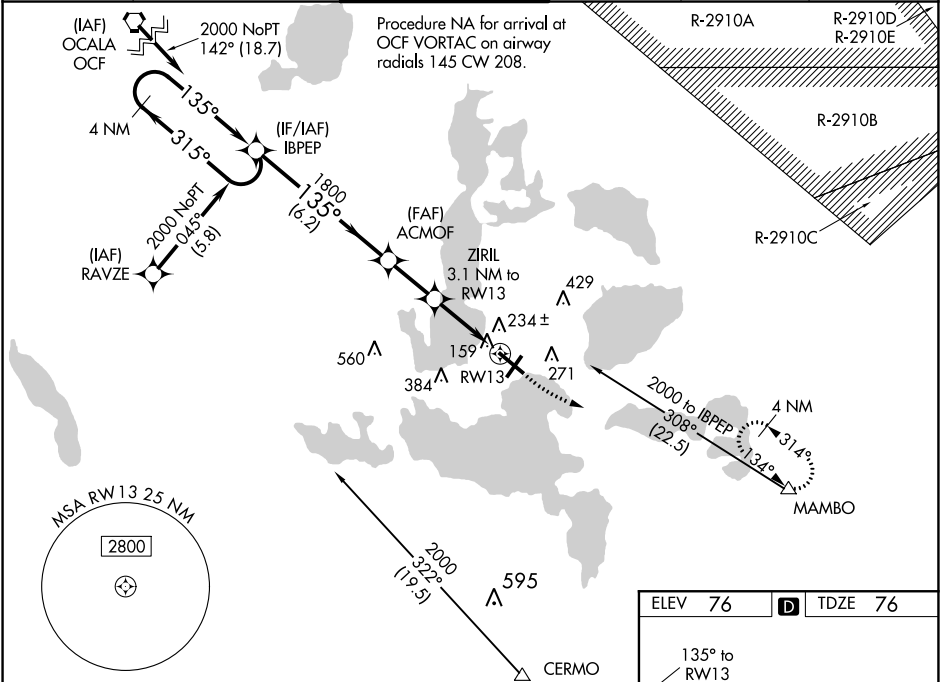
RNAV (GPS) RWY 13

LEESBURG INTL (L/E/E)

▼ Baro-VNAV NA when using Orlando Infil altimeter setting. For uncompensated Baro-VNAV systems, LNAV/VNAV NA below -15°C (5°F) or above 43°C (109°F). DME/DME RNP-0.3 NA. Helicopter visibility reduction below 1 SM NA. When local altimeter setting not received, use Orlando Infil altimeter setting and increase all DA 85 feet and all MDA 100 feet; increase LPV and LNAV/VNAV all Cats and LNAV and Circling Cat C and D visibility ¼ mile. When VGSI inop, Straight-in/Circling Rwy 13 procedure NA at night. When VGSI inop, Circling Rwy 3 and 21 NA at night.

▲ MISSED APPROACH: Climb to 600 then climbing left turn to 2000 direct MAMBO and hold.

ASOS 134.325	ORLANDO APP CON 135.3 351.9	LEESBURG TOWER * 119.35 (CTAF)	GND CON 121.725	GCO 121.725	UNICOM 122.725
------------------------	---------------------------------------	--	---------------------------	-----------------------	--------------------------



CATEGORY	A	B	C	D
LPV DA		362-1	286 (300-1)	
LNAV/VNAV DA		417-1 1/8	341 (400-1 1/8)	
LNAV MDA	500-1	424 (500-1)	500-1 1/4	424 (500-1 1/4)
CIRCLING	700-1	624 (700-1)	700-1 3/4 624 (700-1 3/4)	700-2 624 (700-2)

SE-3, 22 APR 2021 to 20 MAY 2021

SE-3, 22 APR 2021 to 20 MAY 2021