

WAAS CH <b>97602</b> <b>W31A</b>	APP CRS <b>315°</b>	Rwy Idg <b>5900</b> TDZE <b>73</b> Apt Elev <b>76</b>
--	------------------------	---

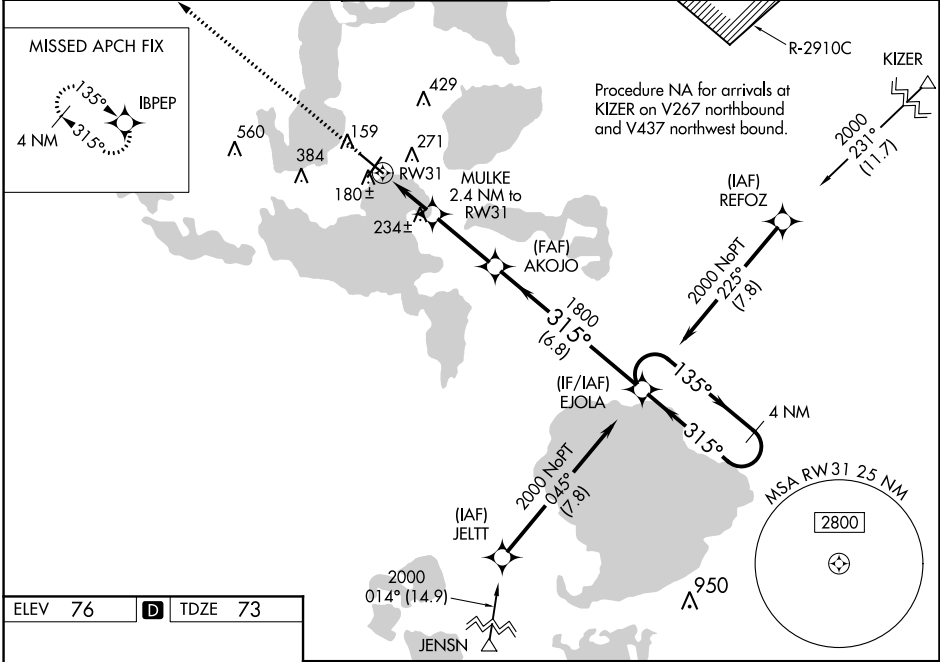
# RNAV (GPS) RWY 31

LEESBURG INTL (L.E.E)

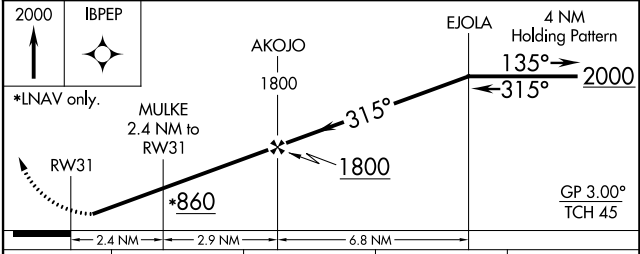
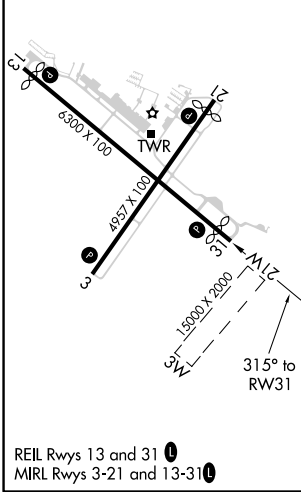
**⚠** Baro-VNAV NA when using Orlando Intl altimeter setting. For uncompensated Baro-VNAV systems, LNAV/VNAV NA below -15°C (5°F) or above 43°C (109°F). DME/DME RNP-0.3 NA. Helicopter visibility reduction below 1 SM NA. When local altimeter setting not received, use Orlando Intl altimeter setting and increase all DA 85 feet and all MDA 100 feet; increase LPV all Cats visibility 1/8 mile, increase LNAV/VNAV all Cats, LNAV and Circling Cats C/D visibility 1/4 mile. When VGSI inop, Straight-in/Circling Rwy 31 procedure NA at night. When VGSI inop, Circling Rwy 3 and 21 NA at night.

**MISSED APPROACH:**  
Climb to 2000 direct IBPEP and hold.

ASOS <b>134.325</b>	ORLANDO APP CON <b>135.3 351.9</b>	LEESBURG TOWER * <b>119.35 (CTAF)</b>	GND CON <b>121.725</b>	GCO <b>121.725</b>	UNICOM <b>122.725</b>
------------------------	---------------------------------------	--	---------------------------	-----------------------	--------------------------



ELEV 76	<b>D</b>	TDZE 73
---------	----------	---------



CATEGORY	A	B	C	D
LPV DA	323-1 250 (300-1)			
LNAV/VNAV DA	357-1 284 (300-1)			
LNAV MDA	500-1 427 (500-1)	500-1¼ 427 (500-1¼)		
CIRCLING	700-1 624 (700-1)	700-1¾ 624 (700-1¾)	700-2 624 (700-2)	

SE-3, 22 APR 2021 to 20 MAY 2021

SE-3, 22 APR 2021 to 20 MAY 2021