

APP CRS	Rwy Idg	<b>4864</b>
<b>172°</b>	TDZE	<b>1364</b>
	Apt Elev	<b>1364</b>

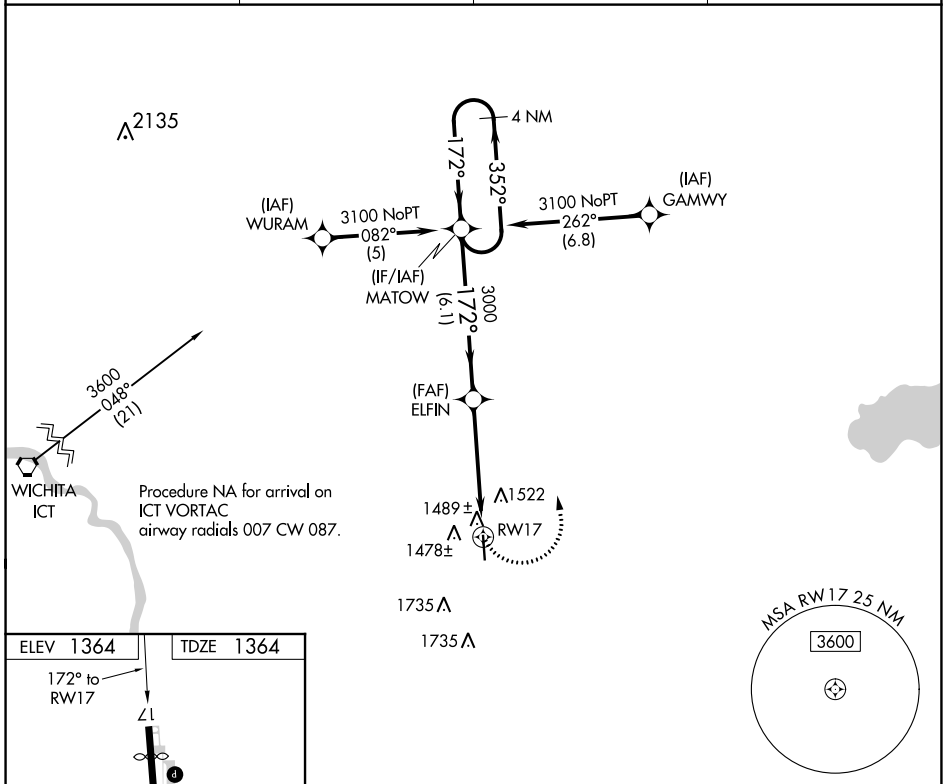
# RNAV (GPS) RWY 17

LLOYD STEARMAN FLD (1K1)

**⚠** DME/DME RNP-0.3 NA. When local altimeter setting not received, use Wichita Dwight D Eisenhower Nil altimeter setting. Straight-in Rwy 17 NA at night, Circling Rwy 17 NA at night. Rwy 17 helicopter visibility reduction below 1 SM NA.

**⚠** NA MISSED APPROACH: Climbing left turn to 3100 direct MATOW and hold.

AWOS-3 <b>118.3</b>	WICHITA APP CON <b>134.8 269.1</b>	CLNC DEL <b>125.0</b>	UNICOM <b>123.075</b> (CTAF) <b>0</b>
------------------------	---------------------------------------	--------------------------	--



NC-2, 22 APR 2021 to 20 MAY 2021

NC-2, 22 APR 2021 to 20 MAY 2021

