

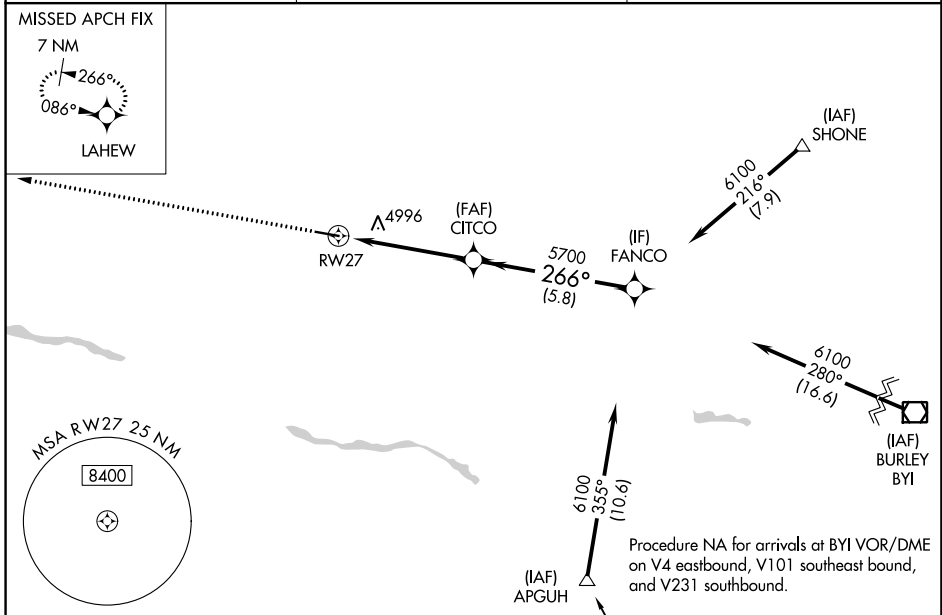
WAAS CH 90514 W27A	APP CRS 266°	Rwy Idg TDZE Apt Elev	5001 4053 4053
--	------------------------	-----------------------------	---

RNAV (GPS) RWY 27

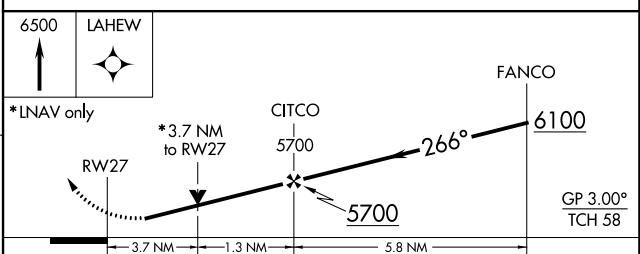
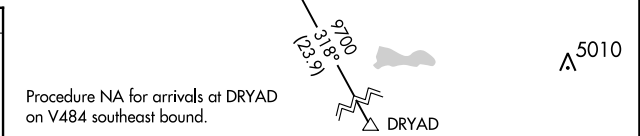
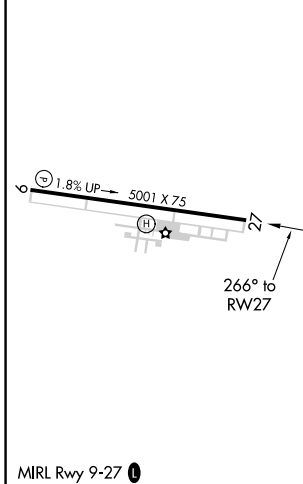
JEROME COUNTY (JER)

RNP APCH.	<p>▽ Circling NA north of Rwy 9 and 27. ▲ Rwy 27 helicopter visibility reduction below ¾ SM NA.</p>	MISSED APPROACH: Climb to 6500 direct LAHEW and hold.
ASOS 135.225		TWIN FALLS APP CON* 126.7 353.75

ASOS 135.225	TWIN FALLS APP CON* 126.7 353.75	UNICOM 122.8 (CTAF) 0
------------------------	--	---------------------------------



ELEV 4053	TDZE 4053
-----------	-----------



CATEGORY	A	B	C	D
LPV DA	4403-1		350 (400-1)	
LNAV MDA	5300-1¼ 1247 (1300-1¼)	5300-1½ 1247 (1300-1½)	5300-3	1247 (1300-3)
C CIRCLING	5300-1¼ 1247 (1300-1¼)	5300-1½ 1247 (1300-1½)	5300-3	1247 (1300-3)

NW-1, 22 APR 2021 to 20 MAY 2021

NW-1, 22 APR 2021 to 20 MAY 2021