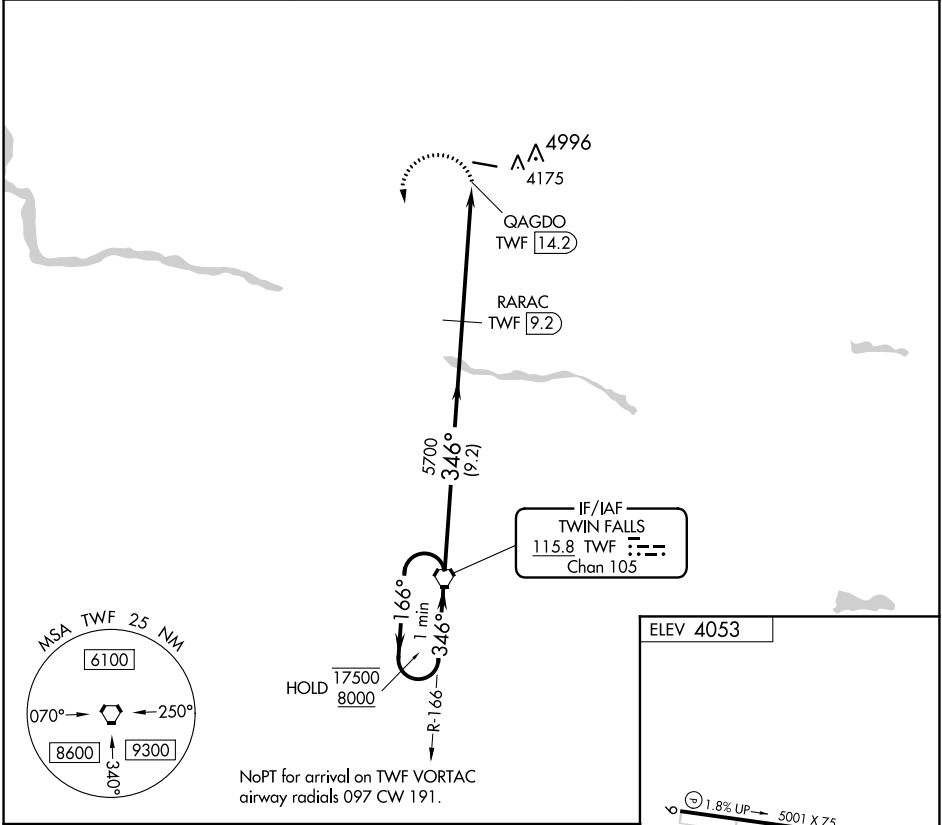


VORTAC TWF <b>115.8</b> Chan <b>105</b>	APP CRS <b>346°</b>	Rwy Idg TDZE Apt Elev	<b>N/A</b> <b>N/A</b> <b>4053</b>
---	------------------------	-----------------------------	---

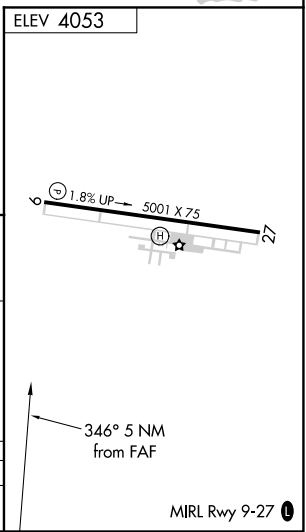
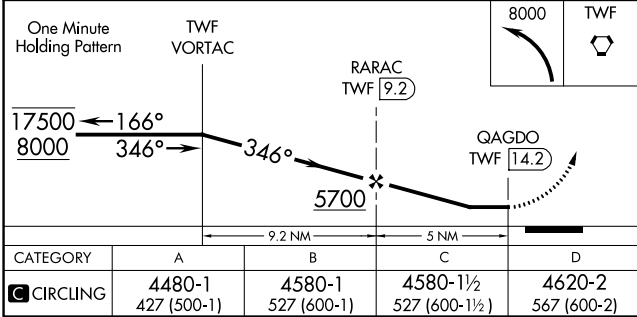
**VOR-A**  
JEROME COUNTY (JER)

DME required.		MISSED APPROACH: Climbing left turn to 8000 direct TWF VORTAC and hold, continue climb-in-hold to 8000.
	Circling NA north of Rwy 9-27.	
ASOS <b>135.225</b>	TWIN FALLS APP CON* <b>126.7 353.75</b>	UNICOM <b>122.8 (CTAF) 0</b>



NW-1, 22 APR 2021 to 20 MAY 2021

NW-1, 22 APR 2021 to 20 MAY 2021



CATEGORY	A	B	C	D
CIRCLING	4480-1 427 (500-1)	4580-1 527 (600-1)	4580-1½ 527 (600-1½)	4620-2 567 (600-2)