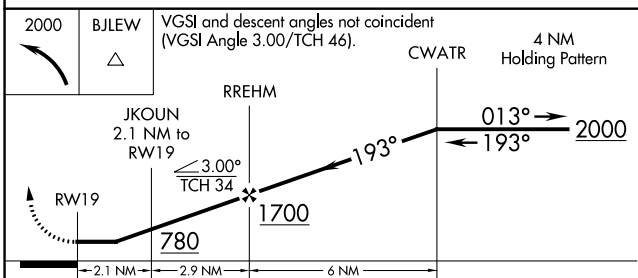
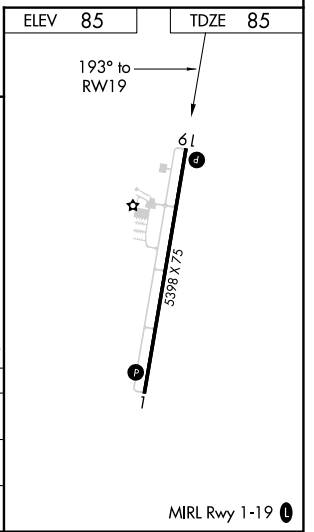
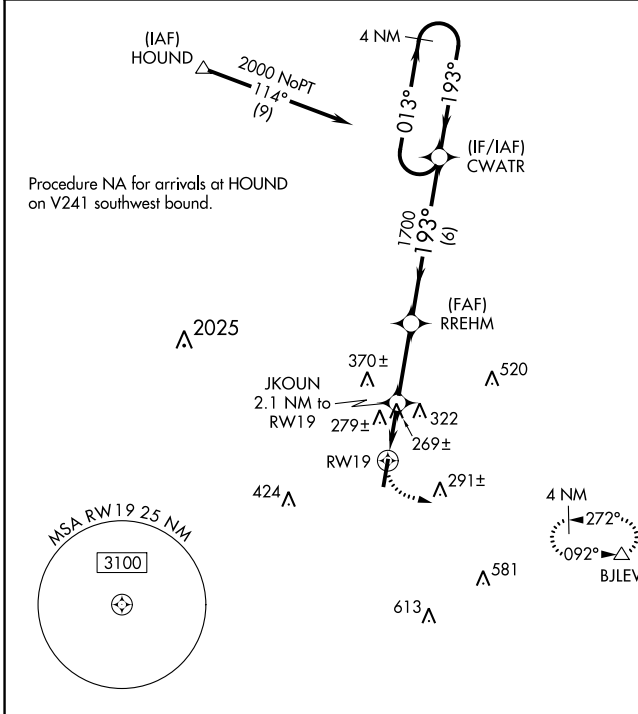


WAAS CH <b>61026</b> <b>W19A</b>	APP CRS <b>193°</b>	Rwy Idg TDZE Apt Elev	<b>5398</b> <b>85</b> <b>85</b>
--	------------------------	-----------------------------	---------------------------------------

# RNAV (GPS) RWY 19

TRI-COUNTY (1J $\emptyset$ )

RNP APCH		MISSED APPROACH: Climbing left turn to 2000 direct BJLEW and hold.
<p>Procedure NA at night. Circling NA to Rwy 1. Rwy 19 helicopter visibility reduction below 1 SM NA. When local altimeter setting not received, use Marianna altimeter setting and increase all MDA 60 feet, and increase LP, LNAV and Circling Cat C visibility 1/2 SM.</p>		
AWOS-3PT <b>119.825</b>	CAIRNS APP CON ★ <b>133.75 270.35</b>	UNICOM <b>122.725</b> (CTAF) $\emptyset$



CATEGORY	A	B	C	D
LP MDA	580-1	495 (500-1)	580-1 $\frac{3}{8}$ 495 (500-1 $\frac{3}{8}$ )	NA
LNAV MDA	600-1	515 (600-1)	600-1 $\frac{3}{8}$ 515 (600-1 $\frac{3}{8}$ )	NA
CIRCLING	640-1 555 (600-1)	660-1 575 (600-1)	660-1 $\frac{1}{2}$ 575 (600-1 $\frac{1}{2}$ )	NA

SE-3, 22 APR 2021 to 20 MAY 2021

SE-3, 22 APR 2021 to 20 MAY 2021