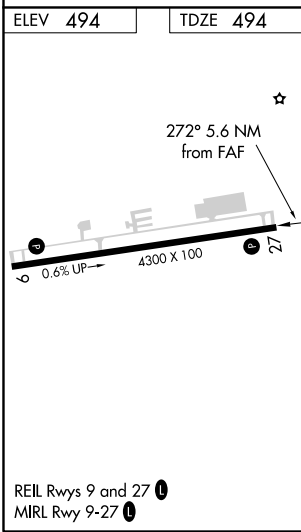
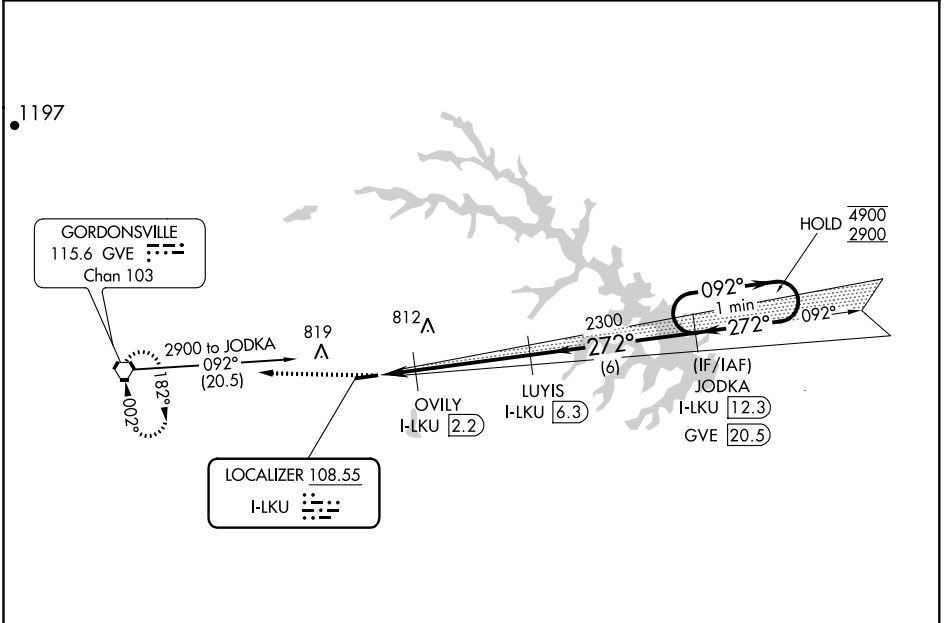


LOC I-LKU 108.55	APP CRS 272°	Rwy Idg TDZE Apt Elev	4300 494 494
----------------------------	------------------------	-----------------------------	---

LOC RWY 27

LOUISA COUNTY/FREEMAN FIELD (LKU)

DME required.		MISSED APPROACH: Climb to 2900 direct GVE VORTAC and hold.
AWOS-3 119.475	POTOMAC APP CON 132.85 323.125	UNICOM 122.975 (CTAF) 0



ELEV 494	TDZE 494	MSA GVE 25 NM 4900 2000 225° 045°			
2900	GVE	OVILY I-LKU 2.2	LUYIS I-LKU 6.3	JODKA I-LKU 12.3	One Minute Holding Pattern
2900	272°	272°	272°	092°	4900
2900	272°	272°	272°	272°	2900
0.9 NM	0.5 NM	4.2 NM	6 NM		
CATEGORY	A	B	C	D	
S-LOC 27	820-1	326 (400-1)			NA
CIRCLING	900-1 406 (500-1)	960-1 466 (500-1)			NA

NE-3, 22 APR 2021 to 20 MAY 2021

NE-3, 22 APR 2021 to 20 MAY 2021