

| | | |
|--|------------------------|---|
| WAAS CH 48843 W09A | APP CRS 092° | Rwy Idg 4300 TDZE 489 Apt Elev 494 |
|--|------------------------|---|

RNAV (GPS) RWY 9

LOUISA COUNTY/FREEMAN FIELD (LKU)

RNP APCH.

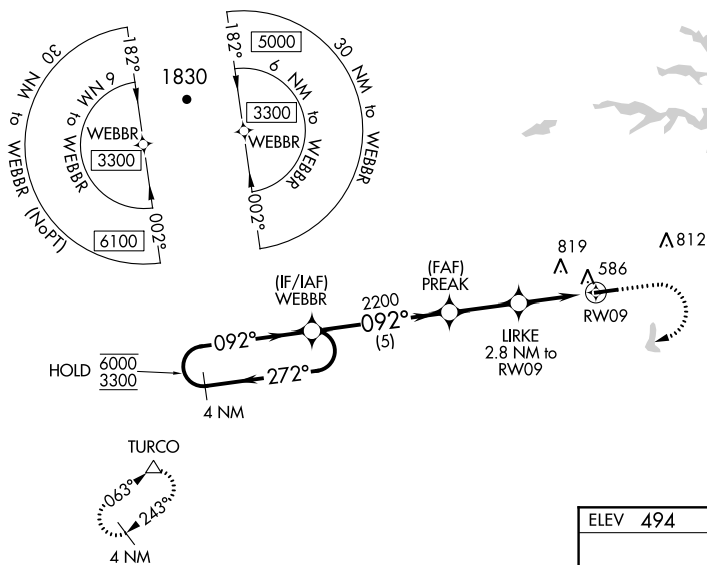
▼ Circling NA north of Rwy 9-27. Rwy 9 helicopter visibility reduction below 3/4 SM NA.
 ▲ For uncompensated Baro-VNAV systems, LNAV/VNAV NA below -15°C or above 54° C.
 When local altimeter setting not received, use Orange altimeter setting and increase LPV DA to 775 feet, LNAV/VNAV DA to 784 feet and MDA 40 feet; increase LPV and LNAV/VNAV visibility 1/8 SM. Baro-VNAV and VDP NA when using Orange altimeter setting.

MISSED APPROACH: Climb to 1000 then climbing right turn to 3300 direct TURCO and hold.

AWOS-3
119.475

POTOMAC APP CON
132.85 323.125

UNICOM
122.975 (CTAF) 1



NE-3, 22 APR 2021 to 20 MAY 2021

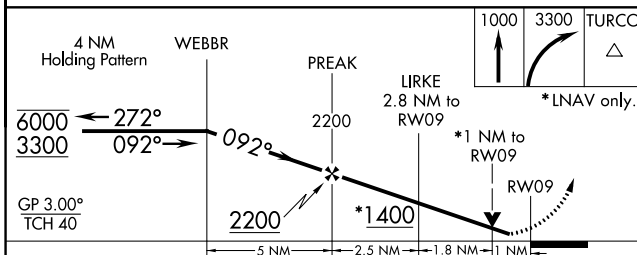
NE-3, 22 APR 2021 to 20 MAY 2021

| | |
|----------|----------|
| ELEV 494 | TDZE 489 |
|----------|----------|

092° to RWY 9

0.6% UP 4300 X 100

REIL Rwy 9 and 27 1
MIRL Rwy 9-27 1



| CATEGORY | A | B | C | D |
|--------------|----------------------|----------------------|---|----|
| LPV DA | 739-3/4 | 250 (300-3/4) | | NA |
| LNAV/VNAV DA | 748-3/4 | 259 (300-3/4) | | NA |
| LNAV MDA | 840-1 | 351 (400-1) | | NA |
| CIRCLING | 900-1 406 (500-1) | 960-1 466 (500-1) | | NA |