

WAAS CH 82517 W12A	APP CRS 120°	Rwy Idg 4501 TDZE 413 Apt Elev 425
--	------------------------	---

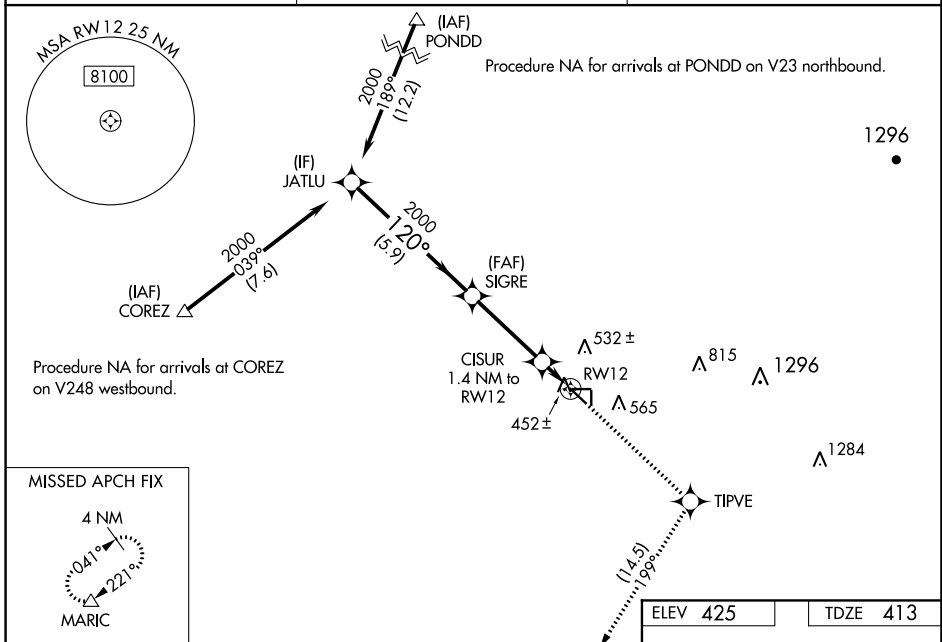
RNAV (GPS) RWY 12

SHAFTER-MINTER FIELD (MIT)

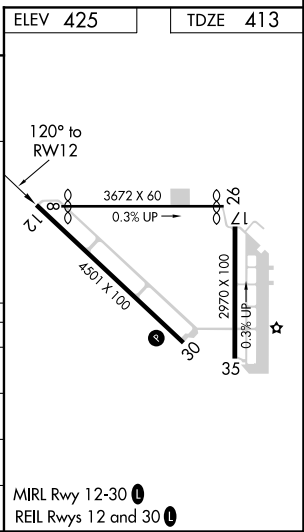
NA Baro-VNAV NA when using Bakersfield altimeter setting. For uncompensated Baro-VNAV systems, LNAV/VNAV NA below -15°C (5°F) or above 54°C (130°F).
 When local altimeter setting not received, use Bakersfield altimeter setting and increase LPV and LNAV/VNAV DA to 694 feet and LNAV/VNAV visibility to 7/8 all Cats; increase all MDA 40 feet. DME/DME RNP-0.3 NA.
 Night Landing Rwy 17, 35, 8, 26 NA.

MISSED APPROACH: Climb to 3000 direct TIPVE and on track 199° to MARIC and hold.

AWOS-3 121.125	BAKERSFIELD APP CON ★ 126.45 270.3	CTAF 122.9
--------------------------	--	----------------------



	JATLU	SIGRE	CISUR 1.4 NM to RW12	RW12	TIPVE	MARIC
	2000	2000	2000	900	3000	tr 199°
	GP 3.00° TCH 45					
	5.9 NM	3.4 NM	0.6 NM	0.8 NM		
CATEGORY	A	B	C	D		
LPV DA		663-3/4 250 (300-3/4)		NA		
LNAV/VNAV DA		663-3/4 250 (300-3/4)		NA		
LNAV MDA		720-1 307 (300-1)		NA		
CIRCLING	900-1	475 (500-1)	900-1 1/2 475 (500-1 1/2)	NA		



SW-3, 22 APR 2021 to 20 MAY 2021

SW-3, 22 APR 2021 to 20 MAY 2021