

WAAS CH <b>99740</b> W19A	APP CRS <b>187°</b>	Rwy Idg TDZE Apt Elev	<b>6200</b> <b>1303</b> <b>1303</b>
---------------------------------	------------------------	-----------------------------	---

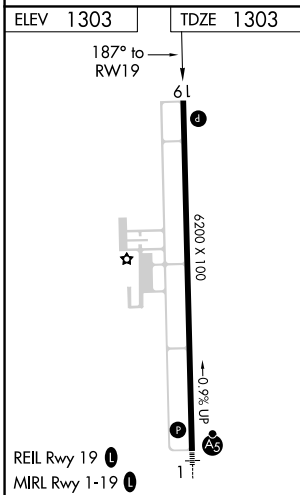
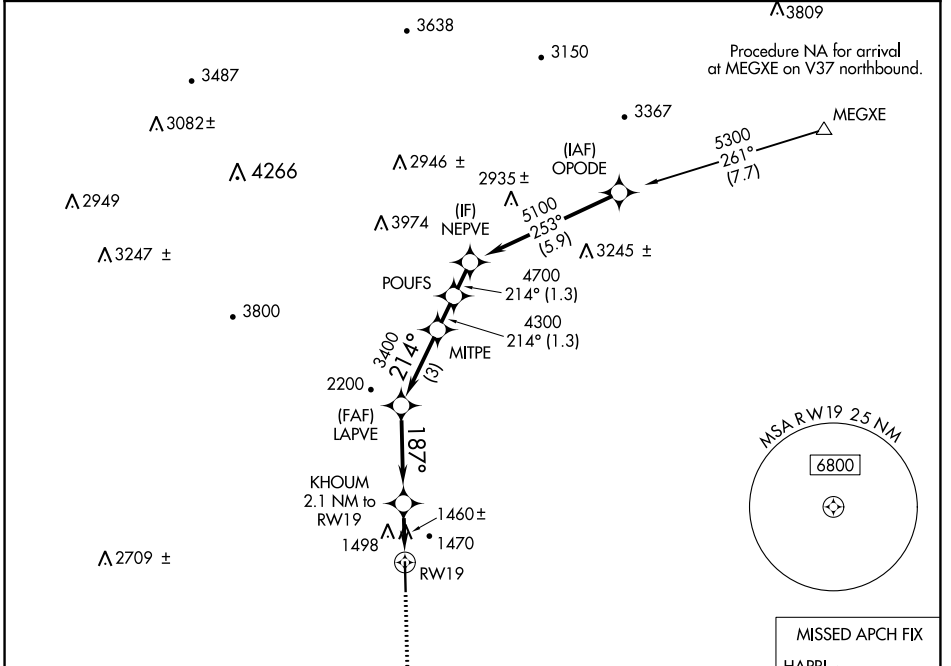
# RNAV (GPS) RWY 19

WILKES COUNTY (UKF)

**⚠** DME/DME RNP-0.3 NA. VDP NA when using Hickory altimeter setting. When local altimeter setting not received, use Hickory altimeter setting and increase all MDAs 100 feet and LP and LNAV visibility Cats C/D ¼ SM and increase Circling visibility Cat C ½ SM. Rwy 19 helicopter visibility reduction below ¾ SM NA.

**MISSED APPROACH:** Climb to 5000 direct HAPRI and hold, continue climb-in-hold to 5000.

AWOS-3 <b>126.625</b>	ATLANTA CENTER <b>125.15 263.0</b>	UNICOM <b>122.7 (CTAF) 0</b>
--------------------------	---------------------------------------	---------------------------------



5000	HAPRI	VGSI and descent angles not coincident (VGSI Angle 3.00/TCH 47).		NEPVE
		KHOUM 2.1 NM to RWY 19	LAPVE MITPE	POUFS
		1.2 NM to RWY 19	3400	4700
		2100	4300	5100
		1.2	0.9	3.5 NM
			3 NM	1.3 NM
			1.3 NM	
CATEGORY	A	B	C	D
LP MDA	1720-1	417 (500-1)	1720-1½	417 (500-1½)
LNAV MDA	1760-1	457 (500-1)	1760-1¾	457 (500-1¾)
CIRCLING	1800-1 497 (500-1)	1880-1 577 (600-1)	1880-1½ 577 (600-1½)	2240-3 937 (1000-3)

SE-2, 22 APR 2021 to 20 MAY 2021

SE-2, 22 APR 2021 to 20 MAY 2021