

APP CRS <b>076°</b>	Rwy Idg <b>5101</b>
	TDZE <b>3305</b>
	Apt Elev <b>3313</b>

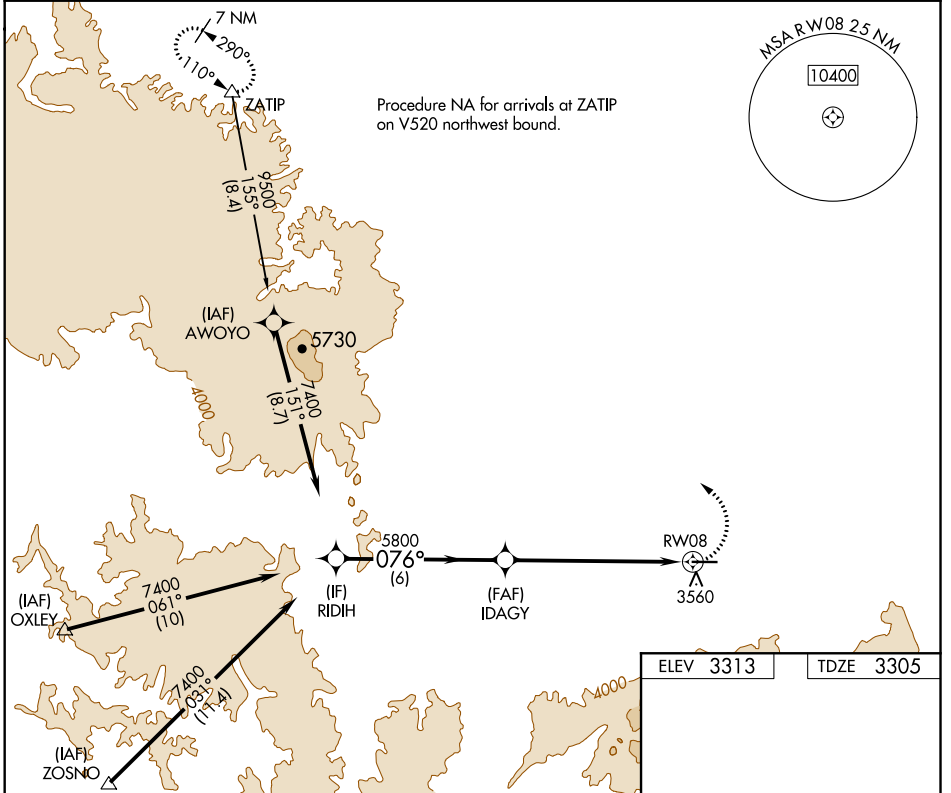
# RNAV (GPS) RWY 8

IDAHO COUNTY (GIC)

**⚠** Circling NA south of Rwy 8-26. Rwy 8 Helicopter visibility reduction below 3/4 SM NA. DME/DME RNP-0.3 NA.

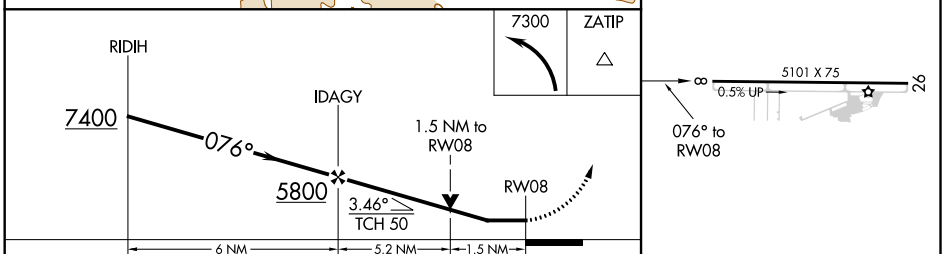
**⚠** MISSED APPROACH: Climbing left turn to 7300 direct ZATIP and hold.

AWOS-3 <b>118.175</b>	SEATTLE CENTER <b>123.95 290.55</b>	CTAF <b>122.8</b>
--------------------------	--	----------------------



NW-1, 22 APR 2021 to 20 MAY 2021

NW-1, 22 APR 2021 to 20 MAY 2021



CATEGORY	A	B	C	D
LNVA MDA	3900-1	595 (600-1)	3900-1 3/4	595 (600-1 1/4)
<b>C</b> CIRCLING	3900-1	587 (600-1)	3900-1 3/4 587 (600-1 3/4)	3900-2 587 (600-2)

MIRL Rwy 8-26  
REIL Rwy 8 **⚠**