

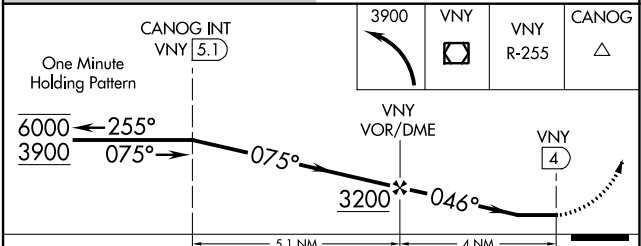
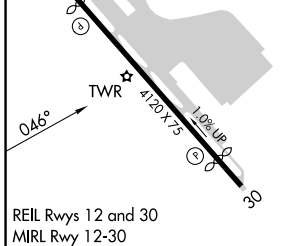
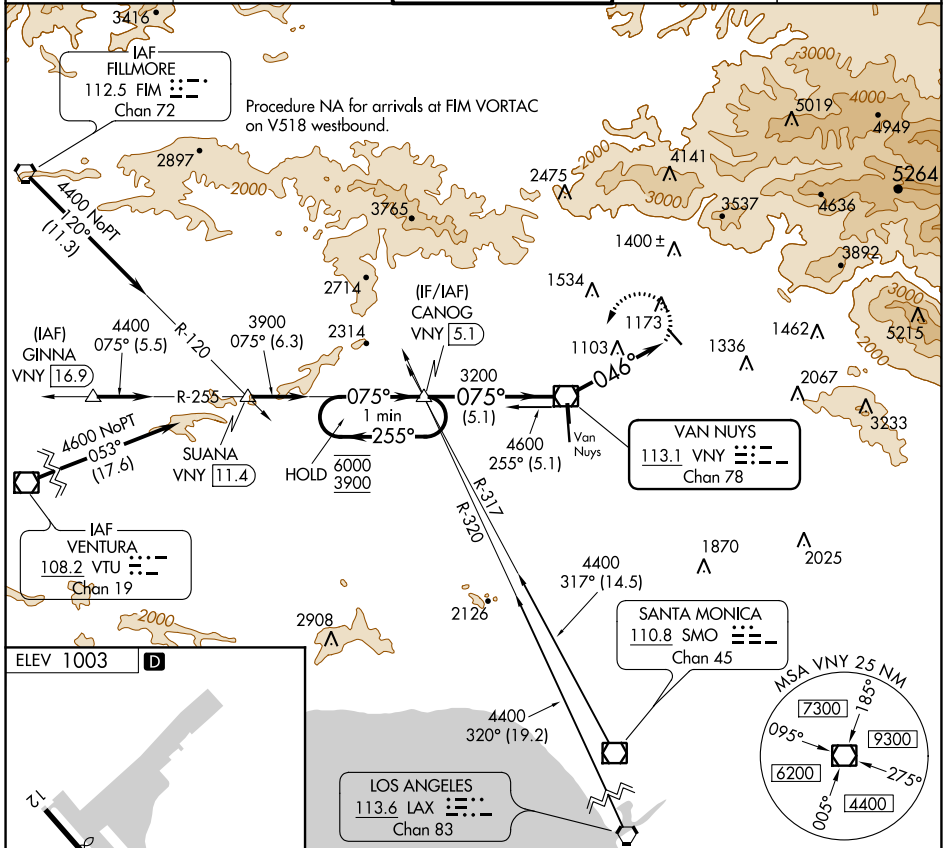
VOR/DME VNY 113.1 Chan 78	APP CRS 046°	Rwy Idg TDZE Apt Elev N/A N/A 1003
--	------------------------	--

VOR-A
WHITEMAN (WHP)

⚠ When local altimeter setting not received, use Burbank altimeter setting. Procedure NA at night.

⚠ MISSED APPROACH: Climbing left turn to 3900 direct VNY VOR/DME then on VNY VOR/DME R-255 to CANOG INT/ 5.1 DME and hold.

ATIS 132.1	SOCAL APP CON 120.4 360.6 (NORTH) 134.2 338.2 (WEST)	WHITEMAN TOWER * 135.0 (CTAF)	GND CON 125.0	UNICOM 122.95
----------------------	--	---	-------------------------	-------------------------



FAF to MAP 4 NM					CATEGORY	A	B	C	D
Knots	60	90	120	150	180	1760-1	1860-1¼	2200-3	NA
Min:Sec	4:00	2:40	2:00	1:36	1:20	757 (800-1)	857 (900-1¼)	1197 (1200-3)	NA

SW-3, 22 APR 2021 to 20 MAY 2021

SW-3, 22 APR 2021 to 20 MAY 2021